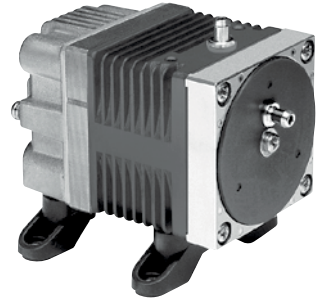
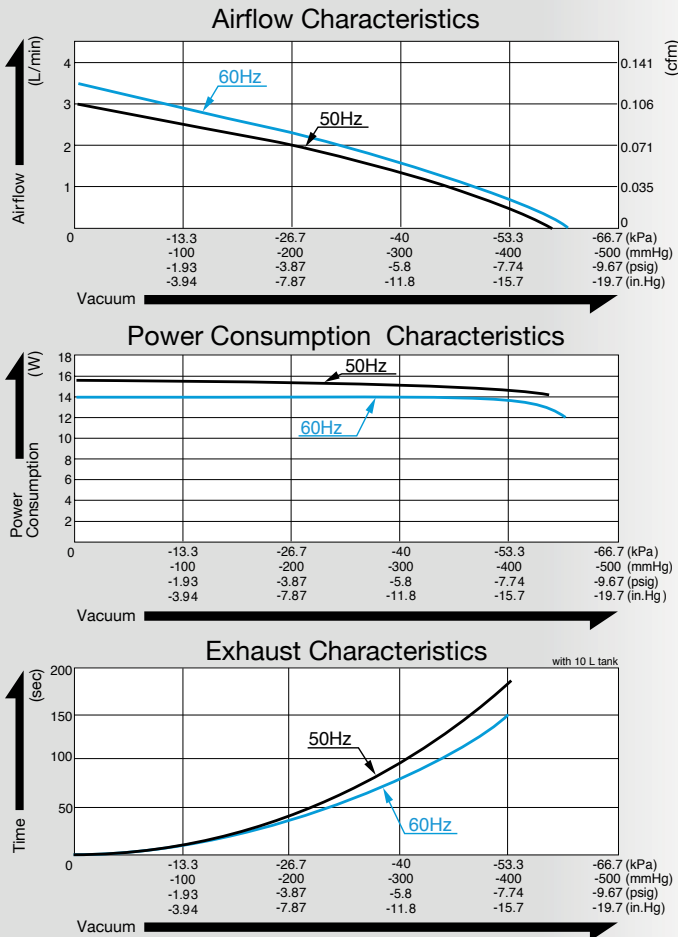


Vacuum Pump

Model VP0140



Airflow & Power Consumption



Specifications

Attainable Vacuum*	-53.3 kPa (-400 mmHg) -533 mbar -15.7 in. Hg	
Free Air Displacement	3 L/min 0.106 cfm	
Rated Voltage	115 V AC	230 V AC
Power Consumption	14 W	15 W
Rated Frequency	60 Hz	50 Hz
Rated Performance (MTTF)	5,000 hours	
Inlet	6 mm O.D. hose barb	
Outlet	6 mm O.D. hose barb	
Duty Cycle	60 minutes	
Coil Insulation Class	E or its equivalent (JETL) and B for UL	
Mounting Dimensions	48 (L) x 62 (W) mm 1-57/64" (L) x 2-7/16" (W)	
Weight	0.7 kg 1.54 Lbs	
Leadwire Length	200 mm 7-7/8"	

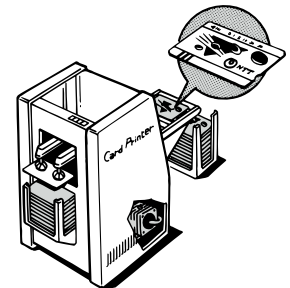
*Operations at higher than -53.5kPa need an additional leak valve or relief valve on the inlet piping.

Application Examples

Dripping Machine



Paper Card Dispenser



Dimensional Outline Drawing (Unit: mm)

