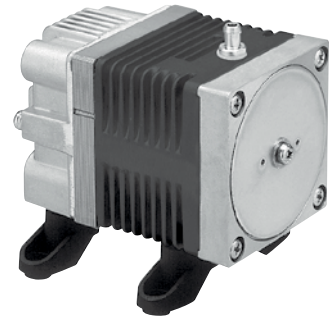
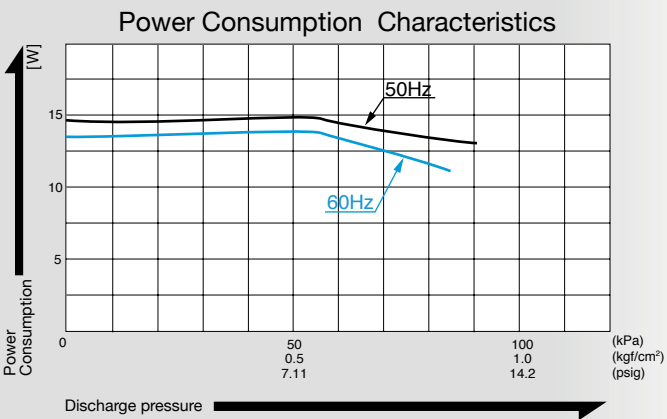
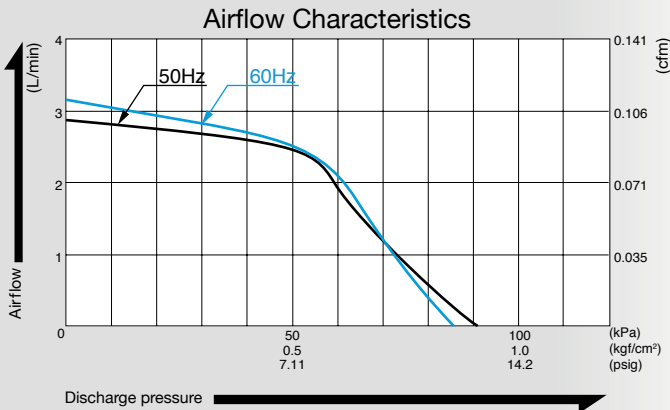


# Compressor

## Model **AC0105**



### Airflow & Power Consumption

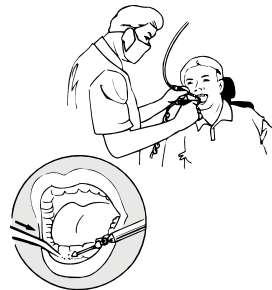


### Specifications

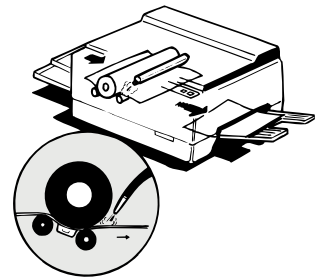
Rated Pressure	50 kPa (0.5 kgf/cm <sup>2</sup> ) 0.5 bar 7.25 psig	
Rated Airflow	2.5 L/min 0.088 cfm	
Maximum Pressure	80 kPa (0.8 kgf/cm <sup>2</sup> ) 0.8 bar 11.6 psig	
Rated Voltage	115 V AC	230 V AC
Power Consumption	14 W	15 W
Rated Frequency	60 Hz	50 Hz
Rated Performance (MTTF)	5,000 hours	
Outlet	6 mm O.D. hose barb	
Duty Cycle	60 minutes	
Coil Insulation Class	E or its equivalent (JETL) and B for UL	
Mounting Dimensions	48 (L) x 62 (W) mm 1-57/64" (L) x 2-7/16" (W)	
Weight	0.7 kg 1.54 Lbs	
Leadwire Length	200 mm 7-7/8"	

### Application Examples

Saline Water Splasher



Copy Paper Separator



### Dimensional Outline Drawing (Unit: mm)

