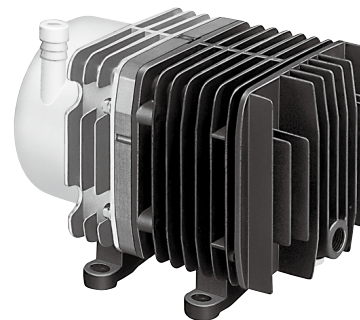
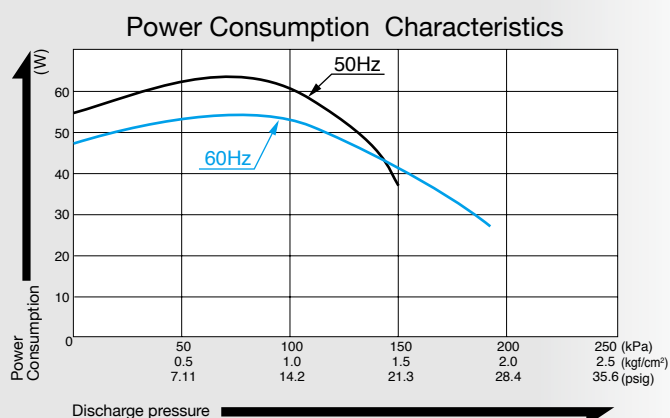
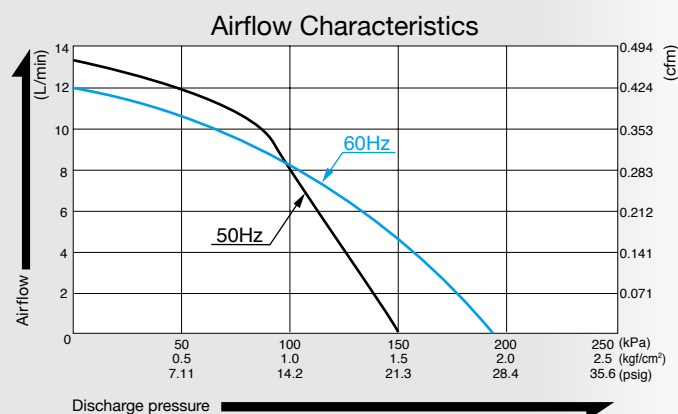


Compressor

Model AC0610



Airflow & Power Consumption

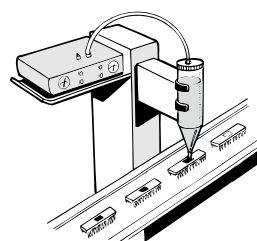


Specifications

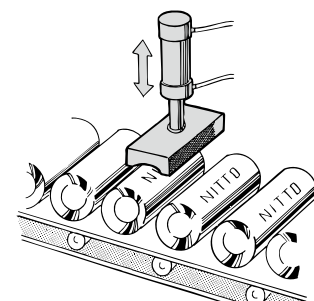
Rated Pressure	100 kPa (1.0 kgf/cm ²) 1.0 bar 14.2 psig	
Rated Airflow	8 L/min 0.283 cfm	
Maximum Pressure	150 kPa (1.5 kgf/cm ²) 1.5 bar 21.3 psig	
Rated Voltage	115 V AC	230 V AC
Power Consumption	52 W	60 W
Rated Frequency	60 Hz	50 Hz
Rated Performance	3,000 hours	
Outlet	ISO Rc 1/4	
Duty Cycle	Continuous	
Coil Insulation Class	E or its equivalent (JETL) and B for UL	
Mounting Dimensions	68 (L) x 84 (W) mm 2-43/64" (L) x 3-5/16" (W)	
Weight	3.2 kg 7.1 Lbs	
Leadwire Length	200 mm 7-7/8"	

Application Examples

Dispenser



Automatic Stamper



Dimensional Outline Drawing (Unit: mm)

