

For Low Pressure

Cube Cupla

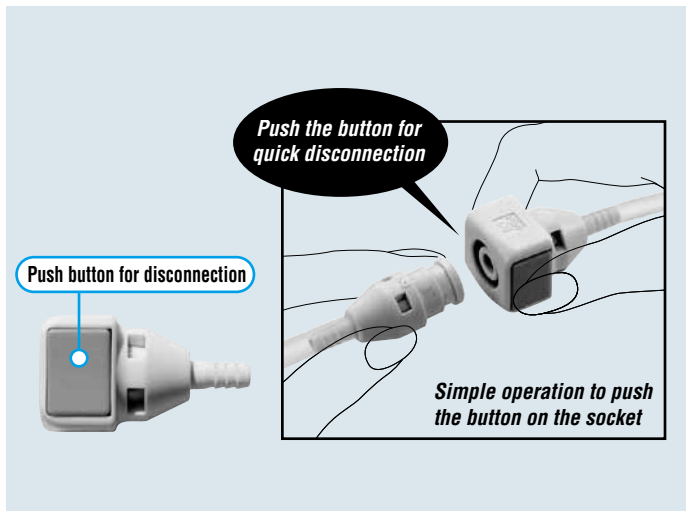
Small and lightweight coupling for air supply lines to medical and/or scientific equipment

Working pressure 1.0 1.0 MPa (10 kgf/cm ²)	Valve structure Two-way shut-off One-way shut-off Straight through	Applicable fluids Air Water
--	--	--

Both socket and plug have built-in valve types and valveless types. Simple one action for connection or disconnection. Lightweight plastic coupling.

- Ultra-lightweight, made of polyacetal resin.
- Compact design for space saving.
- Just push plug into socket for connection. Simply press the button on the socket for disconnection.
- Suitable for a wide range of applications from medical/scientific equipment to beverage machines or semiconductor manufacturing devices.
- Socket and plug cannot be disconnected unless two buttons on the socket are pressed simultaneously.

Note: When valveless type socket or plug is used, fluid will flow out of it when disconnected. Take necessary precaution if the fluid is water.



Specifications							
Body material	Polyacetal resin (POM)						
Size	4 mm and 6 mm ID tube, Rc 1/8						
Working pressure	MPa	1.0					
	kgf/cm ²	10					
	bar	10					
	PSI	145					
Seal material	Nitrile rubber	Mark	NBR (SG)	Working temperature range	-20°C to +60°C	Remarks	Standard material

Max. Tightening Torque		Nm (kgf·cm)
Size (Thread)	1/8"	
Torque	1.3 (13)	

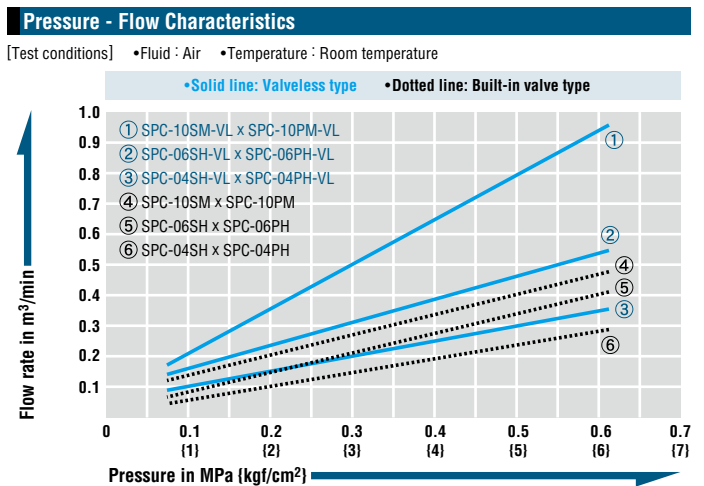
Flow Direction

Fluid may flow in either direction from plug or from socket side when coupled.

Interchangeability
Can be connected with plug and socket for Cube Cupla of the same type regardless of end configurations. However, built-in valve sockets cannot be connected with valveless plugs.

Min. Cross-Sectional Area	(mm ²)					
Model	04PH/04PHB	06PH/06PHB	10PM	04PH-VL/04PHB-VL	06PH-VL/06PHB-VL	10PM-VL
SPC-04SH	5	5	5	—	—	—
SPC-06SH	5	8.6	8.6	—	—	—
SPC-10SM	5	8.6	8.6	—	—	—
SPC-04SH-VL	5	5	5	5	5	5
SPC-06SH-VL	5	8.6	8.6	5	10.2	10.2
SPC-10SM-VL	5	8.6	8.6	5	10.2	16.6

Suitability for Vacuum			53.0 kPa (400 mmHg)
Socket only	Plug only	When connected	
—	—	Operational	

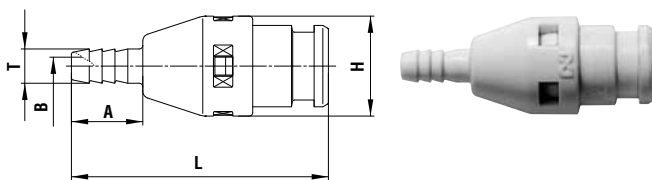


Connection capability Select the combination of models suitable to your applications

Connection capability		Plug	
Socket	Valve	With	Without
	With	 Two-way shut-off	Not connectable
Without	 One-way shut-off	 Straight through	

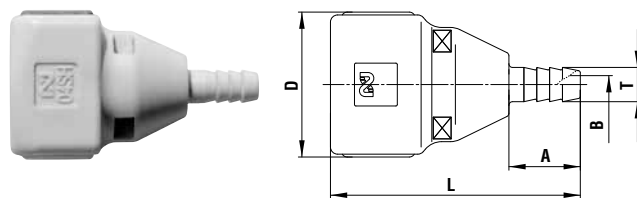
Models and Dimensions

Plug PH type (Hose barb)



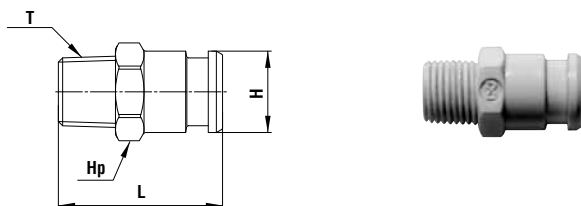
Model	Application (Tube)	Built-in valve	Mass (g)	Dimensions (mm)				
				L	A	øH	øT	øB
SPC-04PH	4 mm ID	With	3.1	(36)	10	14	4.8	2.5
SPC-04PH-VL	4 mm ID	Without	2.6	(36)	10	14	4.8	2.5
SPC-06PH	6 mm ID	With	3.4	(40)	15	14	7	3.6
SPC-06PH-VL	6 mm ID	Without	2.9	(40)	15	14	7	3.6

Socket SH type (Hose barb)



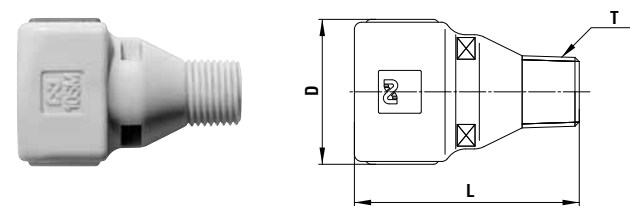
Model	Application (Tube)	Built-in valve	Mass (g)	Dimensions (mm)				
				L	A	D	øT	øB
SPC-04SH	4 mm ID	With	6.5	35	10	(20.3)	4.8	2.5
SPC-04SH-VL	4 mm ID	Without	6.1	35	10	(20.3)	4.8	2.5
SPC-06SH	6 mm ID	With	7.0	40	15	(20.3)	7	3.6
SPC-06SH-VL	6 mm ID	Without	6.6	40	15	(20.3)	7	3.6

Plug PM type (Male thread)



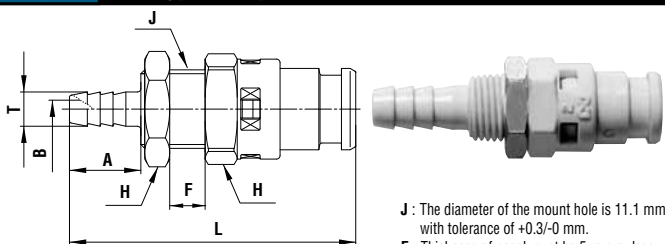
Model	Application	Built-in valve	Mass (g)	Dimensions (mm)			
				L	øH	Hp(WAF)	T
SPC-10PM	Rc 1/8	With	2.0	23	11.4	Hex.12	R 1/8
SPC-10PM-VL	Rc 1/8	Without	1.5	23	11.4	Hex.12	R 1/8

Socket SM type (Male thread)



Model	Application	Built-in valve	Mass (g)	Dimensions (mm)		
				L	D	T
SPC-10SM	Rc 1/8	With	6.8	31.5	(20.3)	R 1/8
SPC-10SM-VL	Rc 1/8	Without	6.4	31.5	(20.3)	R 1/8

Plug PHB type (For panel mount)



Model	Application	Built-in valve	Mass (g)	Dimensions (mm)				
				L	A	H(WAF)	øT	øB
SPC-04PHB	4 mm ID	With	5.9	(40)	10	Hex.14	4.8	2.5
SPC-04PHB-VL	4 mm ID	Without	5.4	(40)	10	Hex.14	4.8	2.5
SPC-06PHB	6 mm ID	With	6.2	(45)	15	Hex.14	7	3.6
SPC-06PHB-VL	6 mm ID	Without	5.7	(45)	15	Hex.14	7	3.6

Application Example

