

INSTRUCTION MANUAL

PNEUMATIC BELT SANDER

Please read this manual carefully before you attempt to use your tool so that you may use it properly and safely.

BELTON Model B-10N, B-20N, B-20NB, B-30N PROFESSIONAL TOOL



B-10N



B-20N



B-20NB



B-30N

Specifications

Model	B-10N	B-20N	B-20NB	B-30N
Maximum Operating Pressure	0.6 MPa			
Air Consumption (No Load)	0.4 m ³ /min	0.52 m ³ /min	0.52 m ³ /min	0.68 m ³ /min
Rated Speed (No Load)	17000 r/min(min ⁻¹)	17000 r/min(min ⁻¹)	17000 r/min(min ⁻¹)	14000 r/min(min ⁻¹)
Standard Belt Size	10×330mm (25/64"×13")	20×520mm (25/32"×20-15/32")		30×540 mm (1-3/16"×21-17/16")
Mass (Weight)	0.7 kg	1.2 kg	1.2 kg	2.4 kg
Sound Pressure Level	78 dB (A)	83 dB (A)	85 dB (A)	82 dB (A)
Sound Power Level	89 dB (A)	94 dB (A)	96 dB (A)	93 dB (A)
Vibration Level	1.28 m/s ²	0.80 m/s ²	0.75 m/s ²	Handle : 1.53 m/s ² Grip : 0.45 m/s ²
Thread Size of Air Inlet	Rc 1/4			

The specifications and configurations contained in this document are subject to change without prior notice due to improvements we are making day in, day out.



Manufactured by :

NITTO KOHKI Co., Ltd.

2-9-4, Nakaikagami, Ohta-ku,
Tokyo, 146-8555, Japan

TEL : (81)-3-3755-1111

FAX : (81)-3-3753-8791

E-mail : overseas@nitto-kohki.co.jp

URL : www.nitto-kohki.co.jp

Keep the manual handy – so you can use it whenever necessary.

Original Instructions

Thank you very much for your purchase of this **Nitto Kohki product**.

Before using your tool, please read this manual carefully so that you may use it properly to get the most out of it.

Please keep the manual handy - so you can use it whenever necessary.

- **English** : Please ask your dealer or distributor for instruction manual in local language(s).
- **German** : Bitte fragen Sie Ihren Händler nach eine Betriebsanleitung in Landessprache.
- **French** : S'il vous plait, veuillez demandez á votre fournisseur de manuel instruction en langue locale.
- **Spanish** : Por favor, contacte con su distribuidor para el manual de instrucciones en español.
- **Portuguese** : Por favor pessa ao seo agente ou distribuidor o manual de instrucces ih linguagen local.
- **Italian** : Per Manuale Istruzioni in lingua locale Vi preghiamo di rivolgervi al rivenditore o distributore.
- **Dutch** : Vraag uw handelaar om een nederladstalige gebruiksaanwijzing.
- **Swedish** : Be er lokala Åtreförsäljare eller distributör om manualer pá svenska.
- **Danish** : Venligst henvend Dem til den danske distributør for instructions manualer.
- **Polish** : Prosze pytac swojego dealera lub dystrybutora o instrukcje obslugi w jezyku localnym.
- **中文** : 請向當地供應商或經銷商詢問中文使用說明書

CONTENTS	page
IMPORTANT SAFETY INSTRUCTIONS	2
GENERAL: TOOLS	2
GENERAL: PNEUMATIC TOOLS	3
INSTRUCTIONS FOR THIS TOOL	4
1. USAGE	4
2. CHECK THE CONTENTS OF THE PACKAGE	4
3. AIR SUPPLY	4
4. PREPARATION	5
5. HOW TO OPERATE THE TOOL	6
6. THREAD SIZE OF HOSE FITTING	9
7. STORAGE	9
8. OPTIONAL PARTS	9
9. ORDERING SERVICE PARTS	9
10. EXPLODED DIAGRAM: B-10N	10
11. EXPLODED DIAGRAM: B-20N	11
12. EXPLODED DIAGRAM: B-20NB	12
13. EXPLODED DIAGRAM: B-30N	13

PICTOGRAM



Warning: It might be dangerous to operate the tool if the instructions supplied are not followed.



Using this tool improperly could result in serious injury. Read the instruction manual before using.



Always wear suitable eye protection.



Always wear suitable hearing protection.



Always wear respiratory protective equipment (PPE).

The following Safety notations are used throughout the manual to highlight safety precautions for the user and for the tool.



Warning:

Indicates a potentially hazardous situation which, if not avoided by following the instructions given, could result in death or serious injury.



Caution:

Indicates a potentially hazardous situation which, if not avoided by following the instructions given, could result in injury or material damage.

Please note, however, that failure to observe safety precautions under the “**Caution**” category could result in a serious occurrence depending on the situation: please observe all safety precautions in the manual.

Caution: Important precautions for tool setup, operation and maintenance.

IMPORTANT SAFETY INSTRUCTIONS

When using the tool, please observe the safety precautions below to prevent possible accident or injury.

GENERAL: TOOLS



Warning

TO OPERATORS

- **Wear proper clothing for the type of work being done.**
Take care to avoid entanglement with the moving parts of the tool with clothing, ties, hair etc. If items become entangled it will cause the operator to be pulled towards the tool and lead to possible cause of accident or injury.
- **Always wear suitable eye protection.**
Remember, regular glasses are not safety glasses. The lenses are only shock resistant, which will not give you sufficient eye protection you may need in your working environment.
- **Always wear suitable hearing protection.**
- **Wear respiratory protective equipment (PPE).**
Wear respiratory protective equipment (PPE) when working in an environment where dust particles are generated in operation.
- **Avoid working posture that is too stressful.**
Always ensure a firm footing and well balanced posture.
- **Do not operate the tool if you are too tired.**
- **Never touch any moving parts of the tool when running.**

ABOUT WORK AREA

- **Keep the work area clean.**
Cluttered work areas (e.g. workbench) invite accidents.
- **Carefully select the work area.**
Do not expose tool to rain.
Do not use tool in a wet or soaked area.
See that the work area is adequately illuminated.
- **Never work near inflammable liquid or in a potentially explosive atmosphere.**
- **Keep children away from the work area.**
Keep children and unauthorized people away from the work area to avoid accident or injury.

BEFORE OPERATION

- **Inspect tool before use.**
Before using, check that screws are securely tightened, that any protective cover or guard is securely in place, other parts are free from damage and that the tool runs as it should.
Check that moving parts are properly adjusted for positioning and tightened, that parts are free from damage and properly mounted, and that all other parts are in good condition for normal operation.
Should you find any damage to the protective cover or other part, replace it in accordance with the Operation Manual. If there are no instructions in the Manual, please contact the sales agent through which you have purchased your tool or an authorized dealer near you for repair.
Likewise, if a switch failure occurs, contact sales agent through which you have purchased your tool or an authorized dealer near you for repair.
Do not use the tool if it does not start or stop with the start/stop switch.
- **Securely mount cutter**
An improperly mounted cutter may fly out, causing possible damage to the tool or injury to the operator.
- **Always remove spanner, wrench, etc., once adjustment has been made with them.**
- **Use a tool appropriate for the application.**
Avoid heavy-duty application that is beyond the capacity of tool.
- **Do not use the tool for purposes other than what it is designed for.**
- **Do not abuse tool.**
Use tool in accordance with the specifications: you'll get the most out of it while ensuring safety.
- **Securely fasten workpiece in place.**
Use a vice or clamp to securely fasten the workpiece in place. It is much safer this way than holding it in your hand, allowing you to operate the tool with both hands.

ABOUT HANDLING

- **How to store tool.**
When the tool is not used, store it in a dry area and out of reach of children.
- **How to carry tool.**
Do not touch the start switch while the tool is being carried.
- **Do not leave the tool unattended while it is running.**
Turn off the start switch and disconnect the tool from power source. Do not leave the work area until the tool comes to a complete stop.

MAINTENANCE/SERVICE

- **Do not take apart or modify tool.**

Disassembly or modification carried out without the supervision of a qualified or authorized service engineer could result in an accident or injury.

- **Inspect cutting tool and accessories, etc.**

Always check to see that cutting tool and accessories, etc. are in good operating condition without damage or deterioration before you mount them on the tool. Should you find any damage to an accessory or part, please contact sales agent through which you have purchased your tool or an authorized dealer near you for repair.

- **Check parts for damage.**

When you have found damage to accessory or other part, carefully check the damaged part to determine the extent of influence it has upon the functions of the tool – that is, determine whether it can still perform its normal functions.

Check to see that the linkage of the moving parts is OK, that all parts are OK without damage, that they are properly mounted, and that the tool functions normally. Should you find any damage to an accessory or part that may hamper proper functioning of the tool, please contact sales agent through which you have purchased your tool or an authorized dealer near you for repair.

- **Have your tool repaired at an authorized Nitto Service Center.**

For repair or parts replacement, please contact the sales agent through which you have purchased your tool or an authorized dealer near you.

- **Use only Nitto genuine parts.**

Use of improper parts may result in serious occurrence.

To obtain a Nitto genuine part, consult this Manual or contact the sales agent from which you have purchased your tool directly.

- **Do not detach label or nameplate from tool.**

When a label/nameplate gets damaged, worn or becomes missing, contact the sales agent through which you have purchased your tool or Nitto Kohki Co. Ltd, directly for a replacement.

DISPOSAL

When a tool is taken permanently out of service, it is advised that the tool is disassembled, degreased and parts separated by material and recycled locally in the appropriate manner.

GENERAL: PNEUMATIC TOOLS

Warning

- **Use appropriate air pressure.**

Excessively high air pressure will increase the number of revolutions or strokes causing not only potential premature failure/breakage but could also lead to an unexpected accident or injury.

- **Connect tool to air supply line.**

There are various types of pipes running in a factory in addition to the pneumatic line (such as oxygen, nitrogen, gas and water). For this reason, always ensure that you are connecting to the pneumatic line.

- **Start tool properly.**

Turn the start switch OFF before connecting to the air supply line.

- **Always disconnect the tool from the air supply line before putting on/taking off any accessory and prior to carrying out any maintenance work.**

- **Avoid exposure to exhaust air.**

Pneumatic tool exhaust air contains oil and contaminated moisture. Make sure the exhaust air is not directed towards your face or anyone else within the work area.

- **Keep tool off electricity.**

This pneumatic tool is not electrically insulated. To avoid a potential electric shock do not use where there is a possibility of coming into contact with live electricity.

Caution

- **Handle tool carefully.**

Abusive use of tool could invite failure or accident. Do not throw, drop or shock the tool.

- **Handle air hose carefully.**

Do not carry the tool by the air hose. Do not pull the air hose to disconnect.

INSTRUCTIONS FOR THIS TOOL

About Your Tool

Warning

- **Wear protective glasses and a dustproof mask.**
Operation generates dust and abrasive particles, etc. which may cause eye and/or respiratory injury: Always use PPE (Personal Protective Equipment) for eye and respiratory protection.
- **When you change or adjust the tool or parts, be sure to detach the tool from the air hose.**
- **Never touch the moving parts while in operation.**

Caution

- **Protect yourself from dust and abrasive particles.**
When sanding hot dust and abrasive particles fly off the workpiece: Always wear eye protection glasses, long sleeve protective clothing, gloves (except knitted gloves), foot and leg protection, etc. to protect yourself. Always keep your face away from the sanding surface.

1. USAGE

This is a handheld pneumatic belt sander designed and built to perform sanding operation utilizing a abrasive belt.

2. CHECK THE CONTENTS OF THE PACKAGE

Upon unpacking, check to see that the shipment is complete without damage or oil leakage in transport. Should you find any damage or short-shipment, please contact sales agent through which you have purchased your tool or authorized dealer near you for corrective actions.

Model	Package Contents	Qty
B-10N	B-10N	1 set
	Abrasive Belts Z76#60×10	2 (one of them mounted)
	Abrasive Belts Z76#80×10	1
	Abrasive Belts Z76#100×10	1
	Abrasive Belts Z76#120×10	1
	Hex. Socket Screw Key 2	1
	Hex. Socket Screw Key 4	1
	Bushing R1/4×NPT1/4	1
	Instruction Manual	1
	Declaration of Conformity	1
	Caution for Use	1
B-20N	B-20N	1 set
	Abrasive Belt Z76#60×20	2 (one of them mounted)
	Abrasive Belt Z76#80×20	1
	Abrasive Belt Z76#100×20	1
	Abrasive Belt Z76#120×20	1
	Hex. Socket Screw Key 2.5	1
	Hex. Socket Screw Key 4	1
	Bushing R1/4×NPT1/4	1
	Finger Pad Sub Ass'y	1 set
	Pan Head Screw 5×10	1
	Pan Head Screw 6×10	1
	Convex Shoe	1
	Instruction Manual	1
	Declaration of Conformity	1
Caution for Use	1	
B-20NB	B-20NB	1 set
	Abrasive Belt Z76#60×20	2 (one of them mounted)
	Abrasive Belt Z76#80×20	1
	Abrasive Belt Z76#100×20	1
	Abrasive Belt Z76#120×20	1
	Hex. Socket Screw Key 4	1
	Bushing R1/4×NPT1/4	1
	Finger Pad Sub Ass'y	1 set
	Pan Head Screw 5×10	1
	Pan Head Screw 6×10	1
	Convex Shoe	1
	Instruction Manual	1
	Declaration of Conformity	1
	Caution for Use	1
B-30N	B-30N	1 set
	Abrasive Belt Z76#60×20	2 (one of them mounted)
	Abrasive Belt Z76#80×20	1
	Abrasive Belt Z76#100×20	1
	Silencer Ass'y	1 set
	Handle Ass'y	1 set
	Hex. Socket Screw Key 4	1
	Hex. Socket Screw Key 5	1
	Bushing R1/4×NPT1/4	1
	Instruction Manual	1
	Declaration of Conformity	1
Caution for Use	1	

3. AIR SUPPLY

3-1. Air Pressure

Adjust air pressure with the Air Regulator to the level appropriate for the pneumatic tool used.

Air pressure that is too low fails the Tool to operate at full capacity.
 Air pressure that is too high may cause damage to the Tool.

3-2. Air Line (Fig.1)

Use a 9.5 mm (3/8") I.D. Connecting Hose between the Compressor and the Tool.
 Drained water, etc., if flown into the Tool, could cause Tool failure. Install an Air Filter. between the Compressor and the Tool.

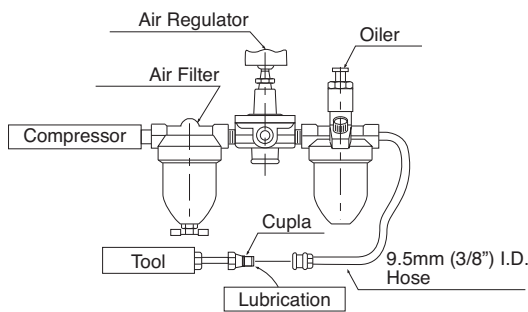


Fig. 1

3-3. Lubrication

Install an Oiler between the Compressor and the Tool. Use the machine oil ISO VG-10. Failure to lubricate as required may result in damage to the Tool. Use of oil that is too thick will reduce the performance of Tool.

4. PREPARATION

4-1. Fastening The Guard

! Caution

• **No clearance should be allowed between the Housing and the Guard. Any clearance, if there is between them, can cause the Abrasive Belt to come off, resulting in injury to the operator or damage to the equipment or both.**

You can set the Guard at any angle you may find best suited for your working posture or the configuration of workpiece. Once you have placed the Guard at a desired angle, tighten the Hex. Socket Head Cap Screw per "A" in Fig. 3 with a Hex. Socket Screw Key. At that time, carefully fasten the Guard so that there is no clearance between the Housing and the Guard.

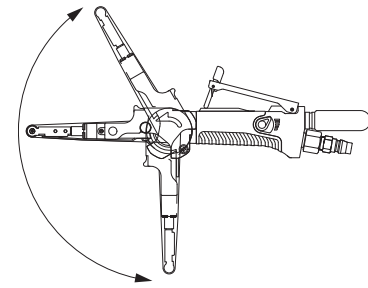
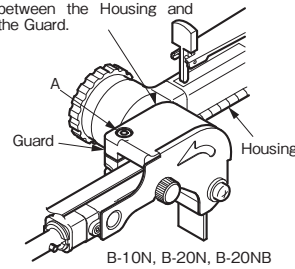


Fig.2

Carefully fasten the Guard so that there is no clearance between the Housing and the Guard.



Carefully fasten the Guard so that there is no clearance between the Housing and the Guard.

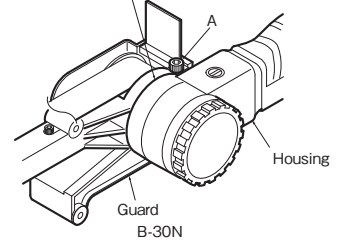


Fig.3

4-2. Installing The Finger Pad B-20N, B-20NB (Fig.4)

! Caution

• **Fasten the Finger Pad securely. Failure to do so may result in injury to the operator or damage to the equipment or both.**

Securely fasten the supplied Finger Pad with two Pan Head Screws, 5X10 and 6X10, clamping both sides of the Guard. At that time, the Finger Pad locator should be on the Guard surface.

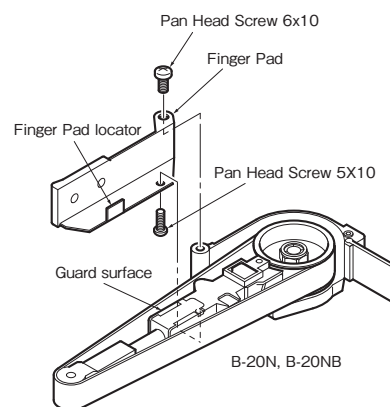


Fig.4

4-3. How To Fix Silencer (B-30N) (Fig.5)

- Insert the Spring into the Exhaust Cover.
- Insert the Spring into the concave of the Bushing PF3/8 of the Belt Sander.
- Insert the convex of the Exhaust Cover into the groove of the Bushing PF3/8.

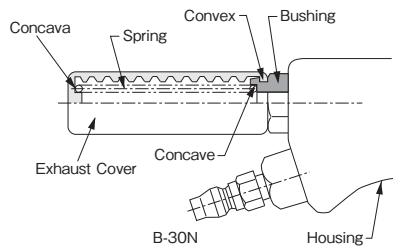


Fig.5

4-4. Attaching the Handle (B-30N) (Fig.6)

Screw the Handle in the side of the Guard.

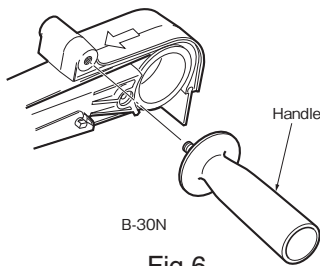


Fig.6

5. HOW TO OPERATE THE TOOL

⚠ Warning

- When sanding, always wear protective glasses and respiratory protection: Microscopic dust and abrasive particles that fly off the workpiece may cause eye or respiratory injury or both.
- Before you change or adjust the tool or parts, always disconnect the air supply hose.
- Never touch the moving parts in operation.

5-1. Start and Stop (Fig. 7)

- (1) Check to see that the Throttle Lever is in the OFF position.
Then connect the hose to the Belt Sander.
- (2) B-10N, B-20N, B-20NB
Holding the Belt Sander:
 - a) Push the Lock Lever down and forward,
 - b) Grasp the Throttle Lever.
- (3) B-30N
Holding the Belt Sander:
 - a) Push the Lock Lever down and behind,
 - b) Grasp the Throttle Lever.
 The Belt Sander starts running.
- (4) When you release the Throttle Lever, it automatically returns to the OFF position.

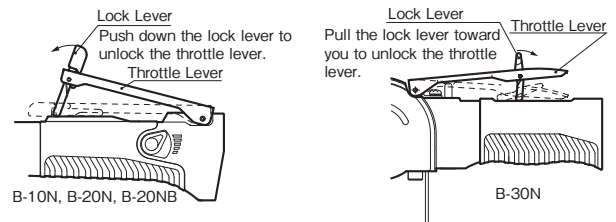


Fig.7

5-2. Adjusting the Rotation Speed (Fig. 8)

- (1) B-10N, B-20N, B-20NB

To adjust the Rotation Speed, turn the Adjusting Lever. It regulates the flow rate of air on which sanding speed depends.

Turning the Lever upward increases the speed. The highest speed is available with the Lever set to the uppermost position.

- (2) B-30N

The desired number of rotation between maximum Rotation Speed and minimum Rotation Speed is obtained by turning the groove of Valve clockwise or counter clockwise with screwdriver.

Maximum Rotation Speed

Position the groove of Adjust Valve horizontal to main body.

Minimum Rotation Speed

Position the groove of Adjust Valve vertical main body.

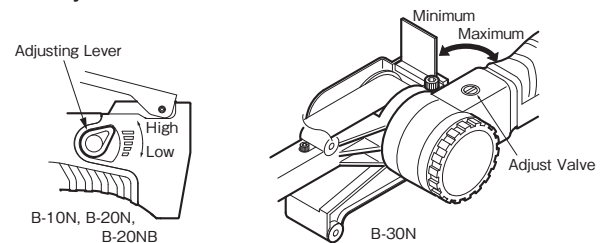


Fig.8

5-3. Tracking Adjustment (Fig. 9)

- (1) B-10N, B-20N, B-30N

Loosen the Adjusting Screw, A and B, per Fig.9 with a Hex. Socket Screw Key.

Then using a Hex. Socket Screw Key, Adjust the screws so that the Abrasive Belt runs right in the middle of the Idle Pulley.

Once tracking adjustment is made correctly, lock the Adjusting Screws.

For B-10N, use a Hex. Socket Screw Key 2.

For B-20N, use a Hex. Socket Screw Key 2.5.

For B-20NB, B-30N, use a Hex. Socket Screw Key 4.

You need not make this tracking adjustment

when you have an optional 6 mm wide Bracket 6 Assembly (applicable to B-10N only).

(2) B-20NB

Loosen the Hex. Cap Screw, Fig.9 with a Hex. Socket Screw Key.

Turn the Hex. Socket Head Cap Screw clockwise or counterclockwise with the accessory Hex. Socket Screw Key in order to make the abrasive belt run on the center of the idle pulley.

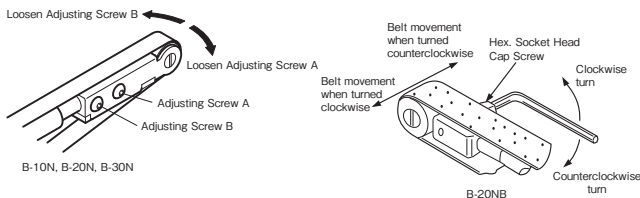


Fig.9

5-4. Sanding Operation

Warning

- Do not press the Abrasive Belt too hard upon the workpiece. If you do so, the Abrasive Belt may break.
- When using a non-woven Belt, do not use the Offset Bracket. If you do so, the Belt may come Off , causing personal injury.

For deburring operation, an Offset Bracket (optional) is to be used.

In this application, the Abrasive Belt will be brought into light contact with the workpiece somewhere in between the Idle Pulley and Offset Bracket.

For Sanding operation, the Offset Bracket will be removed and a Shoe will be used.

The Abrasive Belt will be brought into light contact with the workpiece where the Shoe extends.

5-5. Changing the Abrasive Belt

Caution

- Before servicing, turn the Throttle Lever OFF and disconnect the hose from the Belt Sander.
- When the Abrasive Belt has an arrow marking on its inner face, see to it that you set it to the same direction in which the Belt Sander turns (there is a marking on the Guard), as well. It is dangerous to mount it wrong way for the Abrasive Belt may break prematurely.
- Do not press the Push Button without a Abrasive Belt mounted unless it is absolutely necessary

to do so, for it may cause equipment failure.

- When changing the Abrasive Belt, remove dust and abrasive particles from the Drive Pulley area by air blow, etc.

a) B-10N, B-20N, B-20NB (Fig.10)

- 1) Loosen the Decorative Screw and turn the Belt Cover.
- 2) Keep pushing the Idle Pulley until the Tension Bar locks.
- 3) Change the Abrasive Belt with a new one. Press the Push Button to release Tension Bar locking.
- 4) Turn the Belt Cover to get it back to where it was. Tighten the Decorative Screw.

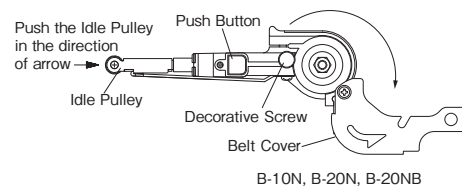
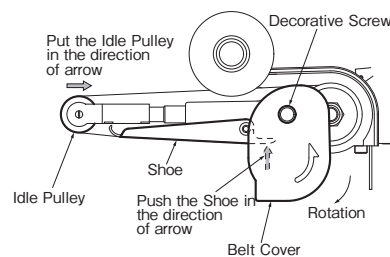


Fig.10

b) B-30N (Fig.11)

- 1) Loosen the Decorative Screw and turn the Belt Cover.
- 2) Keep pushing the Idle Pulley until the Tension Bar locks.
- 3) Change the Abrasive Belt with a new one. Press the Shoe to release Tension Bar locking.
- 4) Turn the Belt Cover to get it back to where it was. Tighten the Decorative Screw.



B-30N
Fig.11

5-6. Offset Bracket (Optional)

The Offset Bracket is designed to utilize the spring action of Abrasive Belt, facilitating light-duty sanding applications, such as contoured surface sanding, deburring, etc.

a) B-10N, B-20N, B-20NB (Fig.12)

- You do not need tools for mounting or removal of the Offset Bracket.
- 1) Following the same procedure as Abrasive Belt replacement, remove the Abrasive Belt.

- 2) Insert the Offset Bracket into the lower part of the Guard.
 - 3) Install the Abrasive Belt and Belt Cover.
- b) B-30N (Fig.13)
- 1) Following the same procedure as Abrasive Belt replacement, remove the Abrasive Belt.
 - 2) Remove the Shoe and mount the Offset Bracket Ass'y. For removal, refer to 5-8 Replacing the Shoe.
 - 3) Install the Abrasive Belt and Belt Cover.

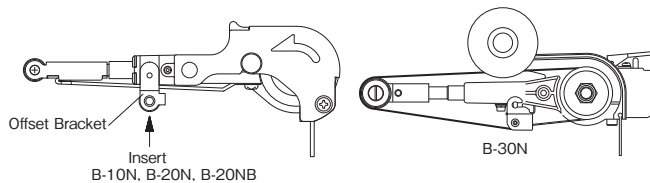


Fig.12

Fig.13

5-7. Replacing the Shoe

- a) B-10N, B-20N, B-20NB (Fig.14)
- Remove the Shoe by loosening Pan Head Screw and replace the Shoe.

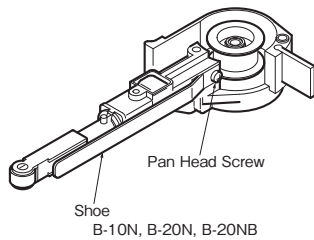


Fig.14

- b) B-30N (Fig.15)
- Remove the Belt Cover, Loosen 2pcs, of the M6 cross-recessed Pan Head Screws with a screwdriver and replace the Shoe.

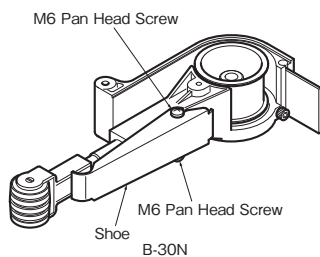


Fig.15

5-8. Replacing the Tension Bar

- a) B-10N, B-20N, B-20NB (Figs.16 and 17)
- 1) Remove the Abrasive Belt.
Press the Push Button.
The Tension Bar will be unlocked.
 - 2) Turn the Tension Bar 90° and pull it off in the direction of arrow.
(See Fig.16 for B-10N)

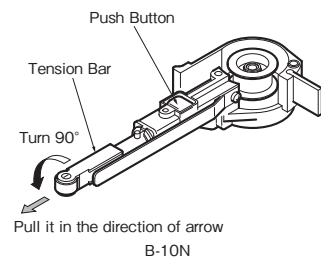


Fig.16

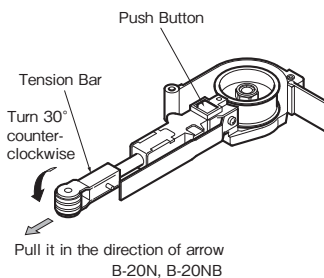


Fig.17

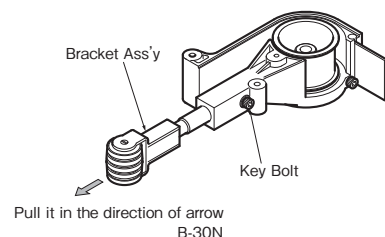


Fig.18

- 3) Turn the Tension Bar 30° counter-clockwise and pull it off in the direction of arrow.
(See Fig.17 for B-20N, B-20NB)
 - 4) When reassembling the Tension Bar, assemble in reverse order.
- b) B-30N (Fig.18)
- 1) Remove the Abrasive Belt, the Belt Cover and the Shoe.
 - 2) Sufficiently loosen the Key Bolt and pull off the Idle Pulley Bracket.
 - 3) For mounting, adjust the groove on the Idle Pulley Bracket to meet the Key Bolt, insert it into the Guard, put the tip of Key Bolt into the groove and fix it so as the Idle Pulley Bracket not to be pulled off.

5-9. Replacing the Idle Pulley

- (1) B-10N, B-20N, B-30N (Fig.19)
Using a flatblade screwdriver and a Phillips Screwdriver (for B-10N) or Hex. Socket Screw Key (for B-20N, B-30N), loosen the Flat Head Screw and pull the Idle Pulley Shaft off.
- (2) B-20NB (Fig.20)
Using a flatblade screwdriver and a Wrench 10, loosen the Hex. Nut M6 and remove the Idle

Pulley B Ass'y. When mounting the Idle Pulley B Ass'y, assemble in reverse order.

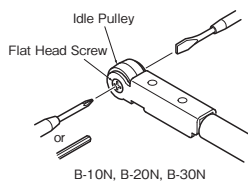


Fig.19

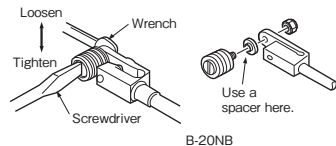


Fig.20

6. THREAD SIZE OF HOSE FITTING

The product comes with a metal fitting with R(metric) thread. Connect the Bushing R thread × NPT thread in the vinyl bag containing standard accessories, if you would like to have American NPT thread instead.

7. STORAGE



Caution

- When tool is not used, store it out of reach of children.

Avoid storing the tool in a location subject to high humidity. If the tool is left as it is used, residual moisture on the inside can cause rusting. Before storing, and after operation, oil the tool at the air inlet with machine oil ISO VG-10 and run it for a short time.

8. OPTIONAL PARTS

In addition to various kinds or grain sizes of abrasive materials and Sanding Belts, we have the following optional items to meet your diversified needs.

- (1) Bracket 6 Ass'y (TB07283) for B-10N for use with our narrow belt 6 mm in width, best suited for corner grinding or grinding in a narrow space. (Fig. 21)
For mounting and removal, see 5-9 Replacing the Tension Bar.
- (2) Offset Bracket Assembly
Offset Bracket 10 Ass'y (TB05539) for B-10N
Offset Bracket 20 Ass'y (TB07109) for B-20N, B-20NB
Offset Bracket 30 Ass'y (TB08150) for B-30N

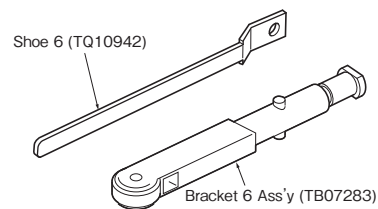


Fig.21

9. ORDERING SERVICE PARTS

For further operational and handling information or for replacement of parts and components, contact the company from whom you purchased the tool or an authorized dealer.

In ordering parts and components give each part number, part name and quantity required.

Use only NITTO genuine parts.

10. EXPLODED DIAGRAM: B-10N

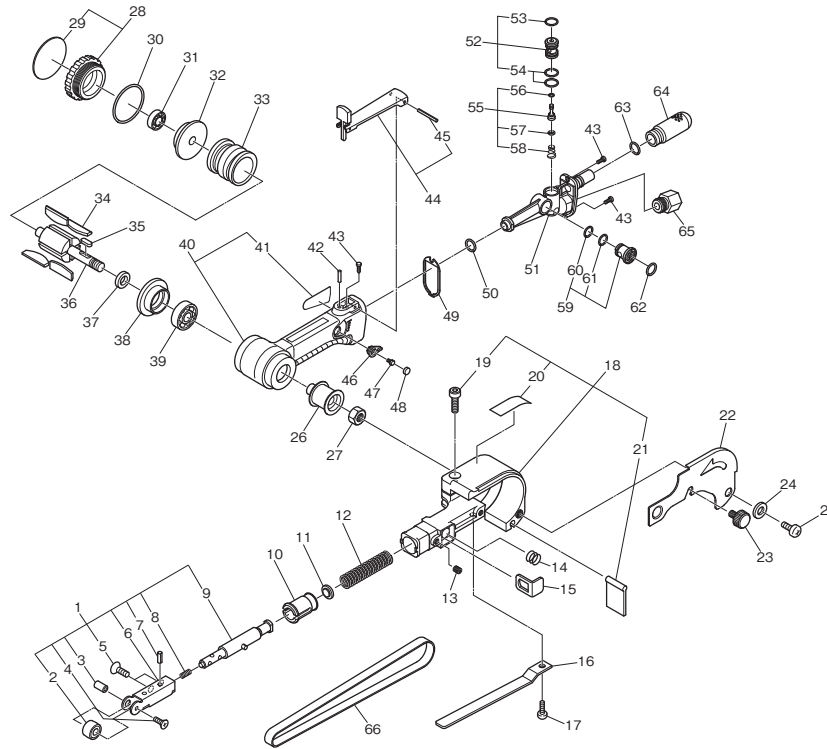
Warning

This diagram is for your reference only. Do not attempt to service or repair the Tool. Do not take the Tool apart. Contact an authorized Nitto dealer for all service and repair of the Tool.

Improper service and repair can cause accidents and severe injuries.

Never attempt to modify the Tool.

Never attempt service or repair the Tool yourself.



The parts numbers with () are included in the Ass'y parts written above them.

No.	Part No.	Description	Qty	Price
1	TB08236	Bracket 10 Ass'y	1set	
2	(TA99155)	Idle Pulley10 Sub Ass'y	1set	
3	(TQ12264)	Idle Pulley Shaft10	1	
4	(TP14455)	Countersunk Head Screw 2X5	1	
5	(TQ10725)	Hex. Socket Countersunk Head Screw 3X6	2	
6	(TB07898)	Bracket 10 Sub Ass'y	1set	
7	(TP14798)	Spring Pin 3X10 AW	1	
8	(TQ10526)	Tension Bar Spring	1	
9	(TB07236)	Tension Bar Shaft Ass'y	1set	
10	TQ07201	Guard Insert	1	
11	TQ10934	Stopper	1	
12	TQ10724	Spring 1.2X8.4X34	1	
13	TP15643	Hex. Socket Set Screw 4X4 with Flat Point	1	
14	TQ07218	Spring 0.35X7.5X7	1	
15	TQ10587	Push Button	1	
16	TQ10709	Shoe 10	1	
17	TP02618	Pan Head Screw 4X8	1	
18	TB07294	Guard Sub Ass'y B	1set	
19	(TP08646)	Hex. Socket Head Cap Screw 5X14	1	
20	(TP16361)	Label Caution	1	
21	(TQ10710)	Dust Cover	1	
22	TQ10711	Belt Cover 10	1	
23	TQ10712	Decorative Screw	1	
24	TP00144	Washer M4	1	
25	TP12819	Pan Head Screw 4X6	1	
26	TP14916	Drive Pulley	1	
27	TP01924	Hex. Nut M6	1	
28	TB08629	Cap Ass'y	1set	
29	(TQ12644)	Label Model B-10N	1	
30	TP05531	O-ring S-36	1	
31	TP06386	Ball Bearing 607ZZ	1	
32	TP12414	End Plate A	1	
33	TP12415	Cylinder	1	
34	TA9A364	Blade Ass'y (4pcs/set)	1set	
35	TP10130	Parallel Key Both Ends Round 3X3X10	1	
36	TP12416	Rotor	1	
37	TP06322	Spacer 8X11X3	1	
38	TP12418	End Plate B	1	

No.	Part No.	Description	Qty	Price
39	TP12419	Ball Bearing 628ZZ	1	
40	TB08626	Housing Sub Ass'y	1set	
41	(TQ12650)	Label Warning	1	
42	TQ11724	Parallel Pin 3X16	1	
43	TQ11560	Tapping Screw 3X8	3	
44	TB07709	Lever Ass'y	1set	
45	(TP13893)	Spring Pin 3X22AW	1	
46	TQ11554	Adjust Lever	1	
47	TP08598	Pan Head Screw 3X5	1	
48	TQ11626	Lever Cap	1	
49	TQ11555	Packing	1	
50	CQ14480	O-ring JASO-1010	1	
51	TB08078	Air Inlet Sub Ass'y	1set	
52	TB07938	Throttle Valve Ass'y	1set	
53	(TP14604)	O-ring S-10	1	
54	(TP12569)	O-ring S-11.2	2	
55	TB07708	Valve Stem Ass'y	1set	
56	(TQ10395)	O-ringSS-2.5	1	
57	(TP11994)	O-ringP-4	1	
58	(TP03769)	Valve Spring	1	
59	TB07937	Adjust Valve Ass'y	1set	
60	(CQ25954)	O-ring AS568-012	1	
61	(CQ05860)	O-ring AS568-013	1	
62	(CP24969)	O-ring JASO-1011	1	
63	TP07031	O-ring S-8	1	
64	TB08079	Silencer Ass'y	1set	
65	TP00857	Bushing M16XRc1/4	1	

Accessories

No.	Part No.	Description	Qty	Price
	TP01939	Hex. Socket Screw Key 4	1	
	TP13892	Hex. Socket Screw Key 2	1	
	TP16597	Abrasive Belt Z76XN #60X10	2	
	TQ00109	Abrasive Belt Z76XN #80X10	1	
	TQ00110	Abrasive Belt Z76 #100X10	1	
	TQ00352	Abrasive Belt Z76 #120X10	1	
	TP02236	Bushing R1/4XNPT1/4	1	
	TQ12660	Instruction Manual	1	
	TQ12617	Declaration of Conformity	1	

11. EXPLODED DIAGRAM: B-20N

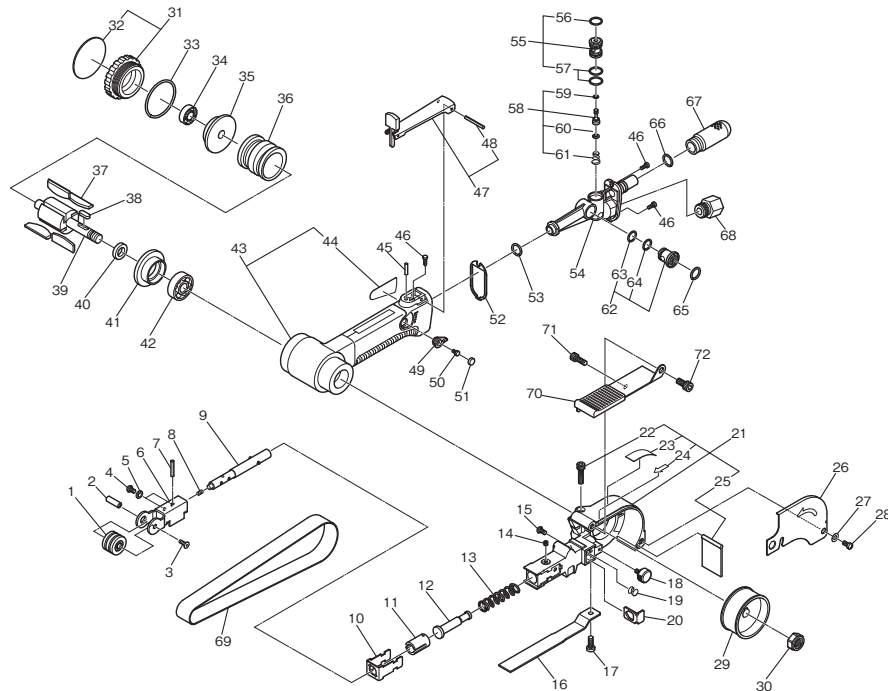
Warning

This diagram is for your reference only. Do not attempt to service or repair the Tool. Do not take the Tool apart. Contact an authorized Nitto dealer for all service and repair of the Tool.

Improper service and repair can cause accidents and severe injuries.

Never attempt to modify the Tool.

Never attempt service or repair the Tool yourself.



The parts numbers with () are included in the Ass'y parts written above them.

No.	Part No.	Description	Qty	Price
1	TA99885	Idle Pulley A Sub Ass'y	1set	
2	TQ11616	Idle Pulley Shaft	1	
3	TP16219	Hex. Countersunk Head Screw 4X10	1	
4	TQ11400	Hex. Socket Button Head Screw4X8	2	
5	TQ12197	Toothed Lock Washer AW-4	2	
6	TB07747	Bracket Sub Ass'y A	1set	
7	TP03544	Spring Pin3X16 AW	1	
8	TQ10526	Tension Bar Spring	1	
9	TB07777	Tension Bar Shaft Ass'y	1set	
10	TQ11610	Stopper	1	
11	TQ11609	Guard Insert	1	
12	TQ11620	Push Rod	1	
13	TQ11621	Spring1.6X11X45	1	
14	TQ12196	Hex. Socket Set Screw 4X5 with Cup Point	1	
15	TQ11659	Hex. Socket Button Head Screw 3X6	1	
16	TQ11611	Shoe	1	
17	TQ11660	Pan Head Screw 5X6	1	
18	TQ10712	Decorative Screw	1	
19	TQ07218	Spring 0.35X7.5X7	1	
20	TQ11622	Push Button	1	
21	TB08068	Guard Sub Ass'y B	1set	
22	(TP04532)	Hex. Socket Head Cap Screw 5X30	1	
23	(TP16361)	Label Caution	1	
24	(TP16360)	Label Rotation	1	
25	(TP16207)	Dust Cover	1	
26	TQ11618	Belt Cover	1	
27	TP00144	Washer M4	1	
28	TP12819	Pan Head Screw4X6	1	
29	TQ11617	Drive Pulley	1	
30	TP01918	Hex. Nut M10	1	
31	TB08630	Cap Ass'y	1set	
32	(TQ12645)	Label Model B-20N	1	
33	CQ04413	O-ring S-38	1	
34	TP00468	Ball Bearing 608ZZ	1	
35	TP01907	End Plate A	1	
36	TP10000	Cylinder	1	
37	TA9A212	Blade Ass'y(4pcs/set)	1set	
38	TP00502	Parallel Key Both Ends Round 4X4X9.5	1	
39	TP01909	Rotor	1	
40	TP01912	Spacer	1	
41	TP01911	End Plate B	1	
42	TP01913	Ball Bearing 6000ZZ	1	

No.	Part No.	Description	Qty	Price
43	TB08627	Housing Sub Ass'y	1set	
44	(TQ12650)	Label Warning	1	
45	TQ11724	Parallel Pin 3X16	1	
46	TQ11560	Tapping Screw 3X8	3	
47	TB07709	Lever Ass'y	1set	
48	(TP13893)	Spring Pin 3X22AW	1	
49	TQ11554	Adjust Lever	1	
50	TP08598	Pan Head Screw3X5	1	
51	TQ11626	Lever Cap	1	
52	TQ11555	Packing	1	
53	CQ14480	O-ring JASO-1010	1	
54	TQ11551	Air Inlet	1	
55	TB07938	Throttle Valve Ass'y	1set	
56	(TP14604)	O-ring S-10	1	
57	(TP12569)	O-ring S-11.2	2	
58	TB07708	Valve Stem Ass'y	1set	
59	(TQ10395)	O-ring SS-2.5	1	
60	(TP11994)	O-ring P-4	1	
61	(TP03769)	Valve Spring	1	
62	TB07937	Adjust Valve Ass'y	1set	
63	(CQ25954)	O-ring AS568-012	1	
64	(CQ05860)	O-ring AS568-013	1	
65	(CP24969)	O-ring JASO-1011	1	
66	TP07031	O-ring S-8	1	
67	TQ11558	Silencer	1	
68	TP00857	Bushing M16XRc1/4	1	

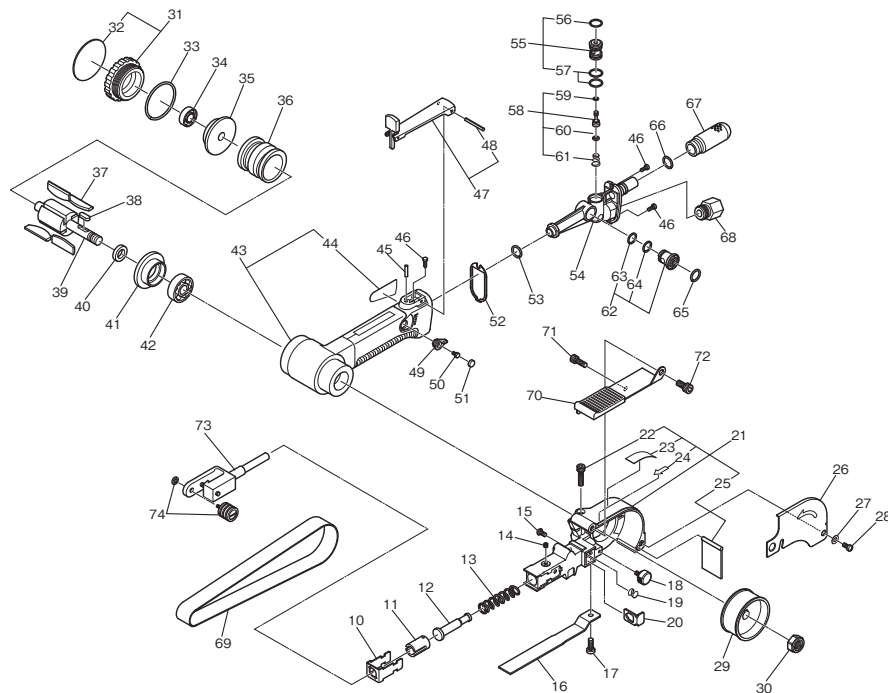
Accessories

No.	Part No.	Description	Qty	Price
69	TP15867	Abrasive Belt Z76X #60X20	2	
	TP15868	Abrasive Belt Z76X #80X20	1	
	TP15869	Abrasive Belt Z76X #100X20	1	
	TP15870	Abrasive Belt Z76X #120X20	1	
70	TB07908	Finger Pad Sub Ass'y	1set	
71	(TP00051)	Pan Head Screw 5X10	1	
	(TP02419)	Pan Head Screw 6X10	1	
72	TP04305	Hex. Socket Screw Key 2.5	1	
	TP01939	Hex. Socket Screw Key 4	1	
	TQ11686	Convex Shoe	1	
	TP02236	Bushing R1/4XNPT1/4	1	
	TQ12660	Instruction Manual	1	
	TQ12617	Declaration of Conformity	1	

12. EXPLODED DIAGRAM: B-20NB

Warning

This diagram is for your reference only. Do not attempt to service or repair the Tool. Do not take the Tool apart. Contact an authorized Nitto dealer for all service and repair of the Tool. Improper service and repair can cause accidents and severe injuries. Never attempt to modify the Tool. Never attempt service or repair the Tool yourself.



The parts numbers with () are included in the Ass'y parts written above them.

No.	Part No.	Description	Qty	Price
73	TB08336	Idle Pulley Bracket Sub Ass'y	1set	
74	TA90514	Idle Pulley B Ass'y	1set	
10	TQ11610	Stopper	1	
11	TQ11609	Guard Insert	1	
12	TQ11620	Push Rod	1	
13	TQ11621	Spring1.6X11X45	1	
14	TQ12196	Hex. Socket Set Screw 4X5 with Cup Point	1	
15	TQ11659	Hex. Socket Button Head Screw 3X6	1	
16	TQ12411	Shoe	1	
17	TQ11660	Pan Head Screw 5X6	1	
18	TQ10712	Decorative Screw	1	
19	TQ07218	Spring 0.35X7.5X7	1	
20	TQ11622	Push Button	1	
21	TB08068	Guard Sub Ass'y B	1set	
22	(TP04532)	Hex. Socket Head Cap Screw 5X30	1	
23	(TP16361)	Label Caution	1	
24	(TP16360)	Label Rotation	1	
25	(TP16207)	Dust Cover	1	
26	TQ11618	Belt Cover	1	
27	TP00144	Washer M4	1	
28	TP12819	Pan Head Screw4X6	1	
29	TQ11617	Drive Pulley	1	
30	TP01918	Hex. Nut M10	1	
31	TB08579	Cap Ass'y	1set	
32	(TQ12604)	Label Model B-20NB	1	
33	CQ04413	O-ring S-38	1	
34	TP00468	Ball Bearing 608ZZ	1	
35	TP01907	End Plate A	1	
36	TP10000	Cylinder	1	
37	TA9A212	Blade Ass'y(4pcs/set)	1set	
38	TP00502	Parallel Key Both Ends Round 4X4X9.5	1	
39	TP01909	Rotor	1	
40	TP01912	Spacer	1	
41	TP01911	End Plate B	1	
42	TP01913	Ball Bearing 6000ZZ	1	
43	TB08627	Housing Sub Ass'y	1set	
44	(TQ12650)	Label Warning	1	
45	TQ11724	Parallel Pin 3X16	1	

No.	Part No.	Description	Qty	Price
46	TQ11560	Tapping Screw 3X8	3	
47	TB07709	Lever Ass'y	1set	
48	(TP13893)	Spring Pin 3X22AW	1	
49	TQ11554	Adjust Lever	1	
50	TP08598	Pan Head Screw3X5	1	
51	TQ11626	Lever Cap	1	
52	TQ11555	Packing	1	
53	CQ14480	O-ring JASO-1010	1	
54	TQ11551	Air Inlet	1	
55	TB07938	Throttle Valve Ass'y	1set	
56	(TP14604)	O-ring S-10	1	
57	(TP12569)	O-ring S-11.2	2	
58	TB07708	Valve Stem Ass'y	1set	
59	(TQ10395)	O-ring SS-2.5	1	
60	(TP11994)	O-ring P-4	1	
61	(TP03769)	Valve Spring	1	
62	TB07937	Adjust Valve Ass'y	1set	
63	(CQ25954)	O-ring AS568-012	1	
64	(CQ05860)	O-ring AS568-013	1	
65	(CP24969)	O-ring JASO-1011	1	
66	TP07031	O-ring S-8	1	
67	TQ11558	Silencer	1	
68	TP00857	Bushing M16XRc1/4	1	

Accessories

No.	Part No.	Description	Qty	Price
69	TP15867	Abrasive Belt Z76X #60X20	2	
	TP15868	Abrasive Belt Z76X #80X20	1	
	TP15869	Abrasive Belt Z76X #100X20	1	
	TP15870	Abrasive Belt Z76X #120X20	1	
70	TB07908	Finger Pad Sub Ass'y	1set	
71	(TP00051)	Pan Head Screw 5X10	1	
	(TP02419)	Pan Head Screw 6X10	1	
72	TP01939	Hex. Socket Screw Key 4	1	
	TQ11686	Convex Shoe	1	
	TP02236	Bushing R1/4XNPT1/4	1	
	TQ12660	Instruction Manual	1	
	TQ12617	Declaration of Conformity	1	

13. EXPLODED DIAGRAM: B-30N

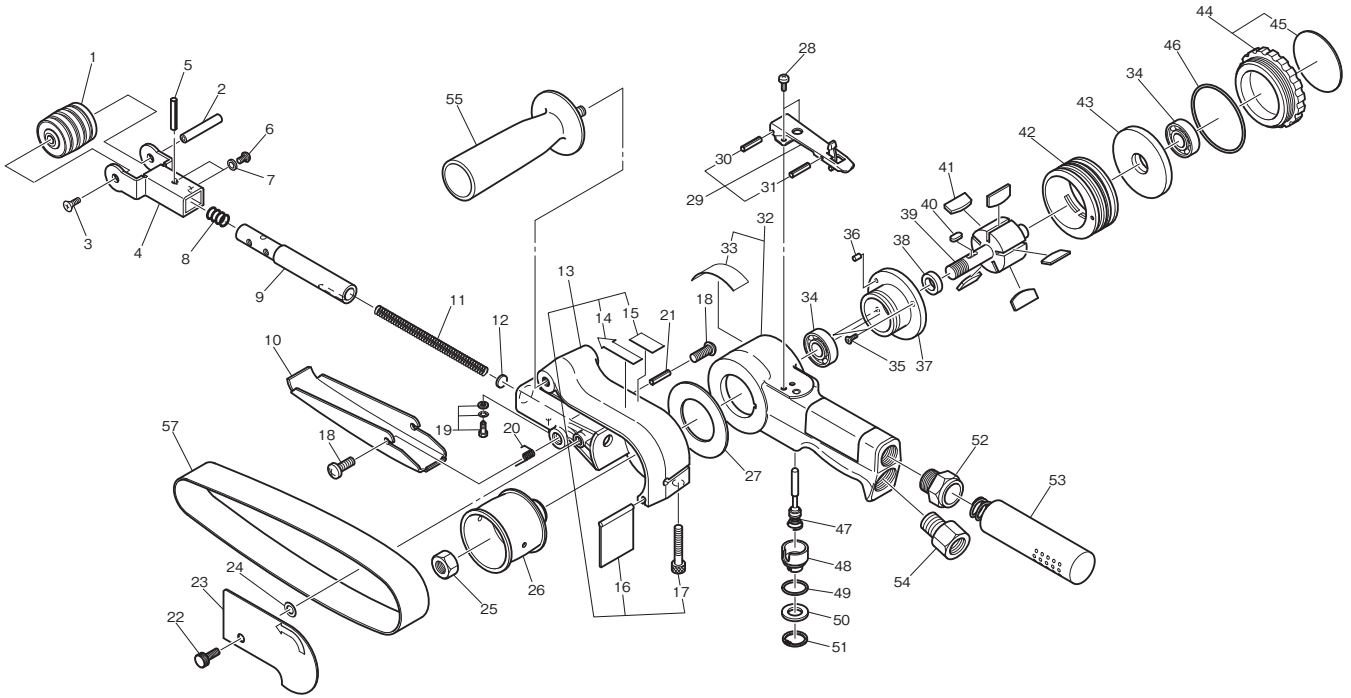
Warning

This diagram is for your reference only. Do not attempt to service or repair the Tool. Do not take the Tool apart. Contact an authorized Nitto dealer for all service and repair of the Tool.

Improper service and repair can cause accidents and severe injuries.

Never attempt to modify the Tool.

Never attempt service or repair the Tool yourself.



The parts numbers with () are included in the Ass'y parts written above them.

No.	Part No.	Description	Qty	Price
1	TB08170	Idle Pulley A Ass'y	1set	
2	TQ11792	Idle Pulley Shaft	1	
3	TP16219	Hex. Countersunk Head Screw 4X10	1	
4	TB08028	Bracket Sub Ass'y	1set	
5	TP07577	Spring Pin 4X16 AW	1	
6	TP08646	Hex.Cap Screw 5X14	2	
7	TQ12215	Toothed Lock Washer AW-5	2	
8	TQ10526	Tension Bar Spring	1	
9	TQ11793	Tension Bar	1	
10	TQ11881	Flat Shoe	1	
11	TQ11794	Spring1.4X7.2X110	1	
12	TQ11838	Spring Guide	1	
13	TB08171	Guard Sub Ass'y B	1set	
14	(TP16360)	Label Rotation	1	
15	(TP16361)	Label Caution	1	
16	(TP04060)	Dust Cover	1	
17	(TP04073)	Hex.Cap Screw 6X35	1	
18	TP08132	Pan Head Screw 6X8	2	
19	TA92254	Key Bolt Ass'y	1set	
20	TQ11810	Shoe Spring	1	
21	TQ11997	Parallel Pin 5X16	1	
22	TQ02418	Decorative Screw 5X10	1	
23	TQ11797	Belt Cover	1	
24	TQ04426	Nylon Washer	1	
25	TP04077	Hex.Nut M12X1.5	1	
26	TQ11807	Drive Pulley	1set	
27	TP04058	Thrust Washer B 36.2X62X1	1	
28	TP06290	Pan Head Screw 4X 8	1	
29	TB01793	Throttle Lever Ass'y	1set	
30	(TP00460)	Spring Pin 3X22 AW	1	
31	(TP05498)	Spring Pin 2X16 AW	1	
32	TB08628	Housing Sub Ass'y	1set	
33	(TQ12656)	Label Warning	1	
34	TP00498	Ball Bearing 6001ZZ	2	

No.	Part No.	Description	Qty	Price
35	TQ11986	Hex. Countersunk Head Screw 4X8	2	
36	TP04061	SpringPin 3X 6 AW	1	
37	TQ11801	Lower Bearing Case	1	
38	TP04036	Spacer	1	
39	TP04032	Rotor	1	
40	TP00502	Parallel Key Both Ends Round 4X4X9.5	1	
41	TA9A215	Blade Ass'y (5pcs/set)	1set	
42	TP04031	Cylinder	1	
43	TP04035	Upper Bearing Case	1	
44	TB08631	Cap Ass'y	1set	
45	(TQ12646)	Label Model	1	
46	TQ11806	O-Ring AS568A-034	1	
47	TA93925	Valve Stem Ass'y	1set	
48	TP12405	Adjust Valve	1	
49	TP12407	O-Ring S- 15	1	
50	TP12406	Spacer 10.5X11.9X1.6	1	
51	CP00987	Internal Retaining Ring C- 18	1	
52	TP10005	Bushing PF 3/8	1	
53	TA96323	Silencer Ass'y	1set	
54	TP00857	Bushing M16XRc1/4	1	

Accessories

No.	Part No.	Description	Qty	Price
55	TB08248	Handle Ass'y	1set	
	TP01939	Hex. Socket Screw Key 4	1	
	TQ00358	Abrasive Belt Z76X # 60X30	2	
57	TQ00359	Abrasive Belt Z76X # 80X30	1	
	TQ00360	Abrasive Belt Z76X #100X30	1	
	TP02236	Bushing R1/4XNPT1/4	1	
	TP04004	Hex. Socket Screw Key 5	1	
	TQ12660	Instruction Manual	1	
	TQ12617	Declaration of Conformity	1	



Overseas Affiliates / Offices

Nitto Kohki U.S.A., Inc.
4525 Turnberry Drive, Hanover Park, IL 60133, U.S.A
Tel: (1)-630-924-9323 Fax:(1)-630-924-0303
http://www.nittokohki.com/index.html

Nitto Kohki Europe Co., Ltd.
Unit 21, Empire Centre, Imperial Way,
Watford Hertfordshire, WD24 4TS, United Kingdom
Tel: (44)-01923-239668 Fax:(44)-01923-248815
http://www.nitto.co.uk/

Nitto Kohki Deutschland GmbH
Lerchenstr. 47, D-71144 Steinenbronn, Germany
Tel: (49)-7157-22436 Fax:(49)-7157-22437
http://www.nitto-kohki.de/

Nitto Kohki Australia Pty. Ltd.
77 Brandl Street, Eight Mile Plains QLD 4113,
Australia
Tel: (61)-7-3340-4600 Fax:(61)-7-3340-4640
http://www.nitto-australia.com.au/

Nitto Kohki Co., Ltd. Singapore Branch
10 Ubi Crescent #01-62, Ubi Techpark Lobby D,
Singapore 408564
Tel: (65)-6227-5360 Fax:(65)-6227-0192
http://www.nitto-kohki.co.jp/e/nksb/

Nitto Kohki Co., Ltd. Shanghai Representative Office
#1117 Ruijing Building, Maoming South Road,
Shanghai 200020 China
Tel: (86)-21-6415-3935 Fax:(86)-21-6472-6957
http://www.nitto-kohki.cn/

Nitto Kohki Co., Ltd. Shenzhen Representative Office
#0726 International Culture Building, 3039, Shennan
Zhong Rd., FutianDistrict, Shenzhen, 518003 China
Tel: (86)-755-8375-2185 Fax:(86)-755-8375-2187
http://www.nitto-kohki.cn/

Nitto Kohki Co., Ltd. Bangkok Representative Office
38Q, House Convent Bldg, 7th Floor, Unit 7A,
Convent Rd, Silom, Bangkok, 10500 Thailand
Tel: (66)-2-632-0307 Fax:(66)-2-632-0308
http://www.nittobkk.com/eng_index.htm

EC DECLARATION OF CONFORMITY

We hereby declare that the following our product conforms with the essential health and safety requirements of EEC Directives.

Product: PNEUMATIC BELT SANDER
Model: BELTON·B·10N, B·20N, B·20NB and B·30N
Serial No: X X X X X X
Consecutive numbers (00001~99999)
Christian era's last digit (0~9)

Manufacturer: NITTO KOHKI Co., Ltd.
2-9-4, Nakaikegami, Ohta-ku, Tokyo, 146-8555, Japan

Authorised Compiler In The Community:
NITTO KOHKI EUROPE Co., Ltd.
Unit21, Empire Centre, Imperial Way, Watford Hertfordshire, WD24 4TS, UK
Tel:(44)-01923-239668 Fax:(44)-01923-248815

Directive: 98/37/EC and 2006/42/EC Machinery Directive

The above product has been evaluated for conformity with above directives using the following European standards.
The technical construction file (TCF) for this product is retained at the above manufacturer's location.

Machinery Directive: EN ISO12100-1:2003, EN ISO12100-2:2003,
EN ISO14121-1:2007, EN792-8:2001+A1:2008, others

Sound Pressure/Power Level: EN ISO15744:2008, EN ISO4871:1996

Vibration Level: EN28662-1:1992, EN ISO8662-8:1997

Name: K.Kishi
Title: GENERAL MANAGER MACHINE TOOLS DIV.

Being the responsible person appointed and employed the manufacturer.