

# ***INSTRUCTION MANUAL***

## **PNEUMATIC BELT SANDER**

Please read this manual carefully before you attempt to use your tool so that you may use it properly and safely.

## **BABY BELTON PROFESSIONAL TOOL**

**Model BB-10A**



### **Specifications**

Model	BB-10A
Maximum Operating Pressure	0.6 MPa
Air Consumption (No Load)	0.26 m <sup>3</sup> /min
Rated Speed (No Load)	16000 r/min (min <sup>-1</sup> )
Standard Belt Size	10×330 mm (25/64□×13□)
Mass (Weight)	0.6 kg
Sound Pressure Level	80 dB (A)
Sound Power Level	91 dB (A)
Vibration Level	0.6 m/s <sup>2</sup>
Thread Size of Air Inlet	Rc 1/4

Due to continuous product development/improvement the specifications and configurations in this document are subject to change without prior notice.



Manufactured by :

**NITTO KOHKI Co., Ltd.**

2-9-4, Nakaikegami, Ohta-ku,  
Tokyo, 146-8555, Japan

Tel : (81)-3-3755-1111

Fax : (81)-3-3753-8791

E-mail : [overseas@nitto-kohki.co.jp](mailto:overseas@nitto-kohki.co.jp)

URL : [www.nitto-kohki.co.jp](http://www.nitto-kohki.co.jp)

**Keep the manual handy – so you can use it whenever necessary.**

Original Instructions

Thank you very much for your purchase of this **Nitto Kohki products**.

Before using your tool, please read this manual carefully so that you may use it properly to get the most out of it.

**Please keep the manual handy - so you can use it whenever necessary.**

- **English** : Please ask your dealer or distributor for instruction manual in local language(s).
- **German** : Bitte fragen Sie Ihren Händler nach eine Betriebsanleitung in Landessprache.
- **French** : S'il vous plait, veuillez demandez á votre fournisseur de manuel instruction en langue locale.
- **Spanish** : Por favor, contacte con su distribuidor para el manual de instrucciones en español.
- **Portuguese** : Por favor pessa ao seu agente ou distribuidor o manual de instruções em linguagem local.
- **Italian** : Per Manuale Istruzioni in lingua locale Vi preghiamo di rivolgerci al rivenditore o distributore.
- **Dutch** : Vraag uw handelaar om een nederladstalige gebruiksaanwijzing.
- **Swedish** : Be er lokala Åtreförsäljare eller distributör om manualer på svenska.
- **Danish** : Venligst henvend Dem til den danske distributør for instructions manualer.
- **Polish** : Proszę pytać swojego dealera lub dystrybutora o instrukcję obsługi w języku lokalnym.
- **中文** : 請向當地供應商或經銷商詢問中文使用說明書

<b>CONTENTS</b>	<b>page</b>
IMPORTANT SAFETY INSTRUCTIONS .....	2
GENERAL: TOOLS .....	2
GENERAL: PNEUMATIC TOOLS .....	3
INSTRUCTIONS FOR THIS TOOL .....	4
1. USAGE .....	4
2. CHECK THE CONTENTS OF THE PACKAGE .....	4
3. AIR SUPPLY .....	4
4. HOW TO OPERATE THE TOOL .....	4
5. THREAD SIZE OF HOSE FITTING .....	6
6. STORAGE .....	6
7. OPTIONAL PARTS .....	6
8. ORDERING SERVICE PARTS .....	6
9. EXPLODED DIAGRAM: BB-10A .....	7

## PICTOGRAM



Warning: It might be dangerous to operate the tool if the instructions supplied are not followed.



Using this tool improperly could result in serious injury. Read the instruction manual before use.



Always wear suitable eye protection.



Always wear suitable hearing protection.



Always wear respiratory protective equipment (PPE).

The following Safety notations are used throughout the manual to highlight safety precautions for the user and for the tool.



### **Warning:**

Indicates a potentially hazardous situation which, if not avoided by following the instructions given, could result in death or serious injury.



### **Caution:**

Indicates a potentially hazardous situation which, if not avoided by following the instructions given, could result in injury or material damage.

Please note, however, that failure to observe safety precautions under the “**⚠ Caution**” category could result in a serious occurrence depending on the situation: please observe all safety precautions in the manual.

**Caution:** Important precautions for tool setup, operation and maintenance.

# IMPORTANT SAFETY INSTRUCTIONS

When using the tool, please observe the safety precautions below to prevent possible accident or injury.

## GENERAL: TOOLS

### Warning

#### TO OPERATORS

- **Wear proper clothing for the type of work being done.**  
Take care so that clothing, ties, hair, etc. will not become entangled with the moving parts. If items become entangled it will cause the operator to be pulled towards the tool and lead to possible cause of accident or injury.
- **Always wear suitable eye protection.**  
Remember, regular glasses are not safety glasses. The lenses are only shock resistant, which will not give you sufficient eye protection you may need in your working environment.
- **Always wear suitable hearing protection.**
- **Wear respiratory protective equipment (PPE).**  
Wear respiratory protective equipment (PPE) when working in an environment where dust particles are generated in operation.
- **Avoid working posture that is too stressful.**  
Always ensure a firm footing and well balanced posture.
- **Do not operate the tool if you are too tired.**
- **Never touch any moving parts of the tool when running.**

#### ABOUT WORK AREA

- **Keep the work area clean.**  
Cluttered work areas (e.g. workbench) invite accidents.
- **Carefully select the work area.**  
Do not expose tool to rain.  
Do not use tool in a wet or soaked area.  
See that the work area is adequately illuminated.
- **Never work near inflammable liquid or in a potentially explosive atmosphere.**
- **Keep children away from the work area.**  
Keep children and unauthorized people away from the work area to avoid accident or injury.

#### BEFORE OPERATION

- **Inspect tool before use.**  
Before using, check that screws are securely tightened, that any protective cover or guard is securely in place, other parts are free from damage and that the tool runs as it should.  
Check that moving parts are properly adjusted for positioning and tightened, that parts are free from damage and properly mounted, and that all other parts are in good condition for normal operation.  
Should you find any damage to the protective cover or other part, replace it in accordance with the Operation Manual. If there are no instructions in the Manual, please contact the sales agent through which you have purchased your tool or an authorized dealer near you for repair.  
Likewise, if a switch failure occurs, contact sales agent through which you have purchased your tool or an authorized dealer near you for repair.  
Do not use the tool if it does not start or stop with the start/stop switch.
- **Securely mount cutter**  
An improperly mounted cutter may fly out, causing possible damage to the tool or injury to the operator.
- **Always remove spanner, wrench, etc., once adjustment has been made with them.**
- **Use a tool appropriate for the application.**  
Avoid heavy-duty application that is beyond the capacity of tool.
- **Do not use the tool for purposes other than what it is designed for.**
- **Do not abuse tool.**  
Use tool in accordance with the specifications: you'll get the most out of it while ensuring safety.
- **Securely fasten workpiece in place.**  
Use a vice or clamp to securely fasten the workpiece in place. It is much safer this way than holding it in your hand, allowing you to operate the tool with both hands.

#### ABOUT HANDLING

- **How to store tool.**  
When the tool is not used, store it in a dry area and out of reach of children.
- **How to carry tool.**  
Do not touch the start switch while the tool is being carried.
- **Do not leave the tool unattended while it is running.**  
Turn off the start switch and disconnect the tool from power source. Do not leave the work area until the tool comes to a complete stop.

## MAINTENANCE/SERVICE

- **Do not take apart or modify tool.**

Disassembly or modification carried out without the supervision of a qualified or authorized service engineer could result in an accident or injury.

- **Inspect cutting tool and accessories, etc.**

Always check to see that cutting tool and accessories, etc. are in good operating condition without damage or deterioration before you mount them on the tool. Should you find any damage to an accessory or part, please contact sales agent through which you have purchased your tool or an authorized dealer near you for repair.

- **Check parts for damage.**

When you have found damage to accessory or other part, carefully check the damaged part to determine the extent of influence it has upon the functions of the tool – that is, determine whether it can still perform its normal functions.

Check to see that the linkage of the moving parts is OK, that all parts are OK without damage, that they are properly mounted, and that the tool functions normally. Should you find any damage to an accessory or part that may hamper proper functioning of the tool, please contact sales agent through which you have purchased your tool or an authorized dealer near you for repair.

- **Have your tool repaired at an authorized Nitto Service Center.**

For repair or parts replacement, please contact the sales agent through which you have purchased your tool or an authorized dealer near you.

- **Use only Nitto genuine parts.**

Use of improper parts may result in serious accident. To obtain a Nitto genuine part, consult this Manual or contact the sales agent from which you have purchased your tool directly.

- **Do not detach label or nameplate from tool.**

When a label/nameplate gets damaged, worn or becomes missing, contact the sales agent through which you have purchased your tool or Nitto Kohki Co. Ltd, directly for a replacement.

## DISPOSAL

When a tool is taken permanently out of service, it is advised that the tool is disassembled, degreased and parts separated by material and recycled locally in the appropriate manner.

# GENERAL: PNEUMATIC TOOLS

## Warning

- **Use appropriate air pressure.**

Excessively high air pressure will increase the number of revolutions or strokes causing not only potential premature failure/breakage but could also lead to an unexpected accident or injury.

- **Connect tool to air supply line.**

There are various types of pipes running in a factory in addition to the pneumatic line (such as oxygen, nitrogen, gas and water). For this reason, always ensure that you are connecting to the pneumatic line.

- **Start tool properly.**

Turn the start switch OFF before connecting to the air supply line.

- **Always disconnect the tool from the air supply line before putting on/taking off any accessory and prior to carrying out any maintenance work.**

- **Avoid exposure to exhaust air.**

Pneumatic tool exhaust air contains oil and contaminated moisture. Make sure the exhaust air is not directed towards your face or anyone else within the work area.

- **Keep tool off electricity.**

This pneumatic tool is not electrically insulated. To avoid a potential electric shock do not use where there is a possibility of coming into contact with live electricity.

## Caution

- **Handle tool carefully.**

Abusive use of tool could invite failure or accident. Do not throw, drop or shock the tool.

- **Handle air hose carefully.**

Do not carry the tool by the air hose. Do not pull the air hose to disconnect.

# INSTRUCTIONS FOR THIS TOOL

## About Your Tool

### Warning

- **Wear protective glasses and a dustproof mask.**  
Operation generates dust and abrasive particles, etc. which may cause eye and/or respiratory injury: Always use PPE (Personal Protective Equipment) for eye and respiratory protection.
- **When you change or adjust the tool or parts, be sure to detach the tool from the air hose.**
- **Never touch the moving parts while in operation.**
- **Do not remove the Protective Cover from the tool while sanding. The Abrasive Belt runs very fast. Without the Protective Cover, your fingers and hand may be injured when they touch the running belt.**

### Caution

- **Protect yourself from dust and abrasive particles.**  
When sanding hot dust and abrasive particles fly off the workpiece: Always wear eye protection glasses, long sleeve protective clothing, gloves (except knitted gloves), foot and leg protection, etc. to protect yourself. Always keep your face away from the sanding surface.
- **Always use the genuine Abrasive Belt for the belt sander BB-10A (Nitto Kohki Co., Ltd.).**

## 1. USAGE

This is a handheld pneumatic belt sander designed and built to perform sanding operation utilizing an abrasive belt.

## 2. CHECK THE CONTENTS OF THE PACKAGE

Upon unpacking, check to see that the shipment is complete without damage or oil leakage in transport. Should you find any damage or short-shipment, please contact sales agent through which you have purchased your tool or authorized dealer near you for corrective actions.

Package Contents	Qty	Check
BB-10A	1set	
Abrasive Belt Z76 #100×10; (on tool)	1	
Abrasive Belt Z76 #120×10	1	
Abrasive Belt Z76 #180×10	1	
Abrasive Belt Z76 #240×10	1	
Hex. Socket Screw Key 1.5	1	
Bushing R1/4×NPT1/4	1	
Instruction Manual	1	
Declaration of Conformity	1	
Caution for Use	1	

## 3. AIR SUPPLY

### 3-1. Air Pressure

Adjust air pressure with the Air Regulator to the level appropriate for the pneumatic tool used.

Air pressure that is too low fails the Tool to operate at full capacity.

Air pressure that is too high may cause damage to the Tool.

### 3-2. Air Line (Fig. 1)

Use a 9.5 mm (3/8") I.D. Connecting Hose between the Compressor and the Tool.

Drained water, etc., if flown into the Tool, could cause Tool failure. Install an Air Filter. between the Compressor and the Tool.

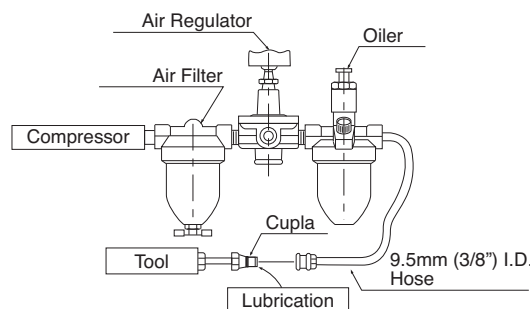


Fig. 1

### 3-3. Lubrication

Install an Oiler between the Compressor and the Tool. Use the machine oil ISO VG-10. Failure to lubricate as required may result in damage to the Tool. Use of oil that is too thick will reduce the performance of Tool.

## 4. HOW TO OPERATE THE TOOL

### Warning

- **When sanding, always wear protective glasses and respiratory protection: Microscopic dust and abrasive particles that fly off the workpiece may cause eye or respiratory injury or both.**

- **Before you change or adjust the tool or parts, always disconnect the air supply hose.**
- **Never touch the moving parts in operation.**

**4-1. Start and Stop (Fig. 2)**

- (1) Make sure the Throttle Lever is in the OFF position and connect air supply hose to the Cupla plug on the tool.
  - (2) Only when the Throttle Lever is in the OFF position, you should select the belt rotating direction by turning the Valve Ring. The arrow on the housing and that on the Valve Ring have color coordination for your easy perception. Turn the Valve Ring to the end until stop.
- ※ Do not turn on the Throttle Lever when the Valve Ring is in the end stop position. Never turn the Valve Ring while the Throttle Lever is in ON position. Such may cause fault.
- (3) To start, release the Lock Lever and press the Throttle Lever down.
  - (4) To stop, remove your finger off the Throttle Lever, it will automatically turn to original OFF position.

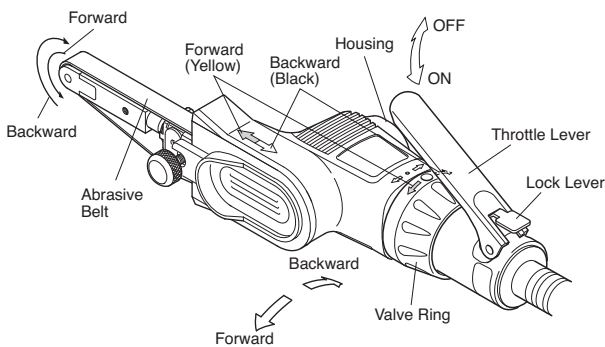


Fig. 2

**4-2. Adjusting the Rotation Speed (Fig. 3)**

The appropriate air volume or, as the result, the desired speed is obtained by turning the Adjust Valve clockwise or counterclockwise with screwdriver in the slot. You will get the maximum rotation speed when the Adjust Valve slot align to the tool body length. Adjust the speed suitable to your applications.

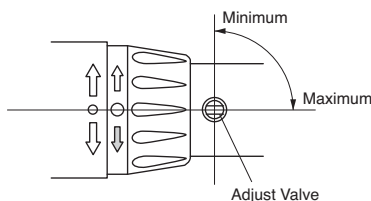


Fig. 3

**4-3. Changing the Abrasive Belt (Fig. 4 and 5)**

Loosen the Cover Screw fixing the Cover and remove the Cover.

Push the Idle Pulley against the Housing to lock the Tension Bar.

Change the Abrasive Belt with a new one and press the Push Button. The Tension Bar is unlocked. (Fig. 4) Remount the Cover correctly and tighten the Cover Screw firmly. (Fig. 5)

**⚠ Caution**

**Do not press the Push Button many times without the Abrasive Belt on the tool. If done, the locking mechanism may be damaged.**

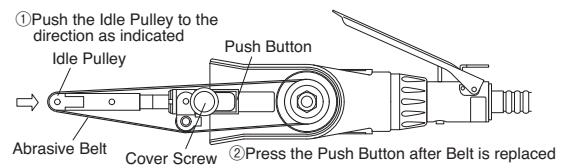


Fig. 4

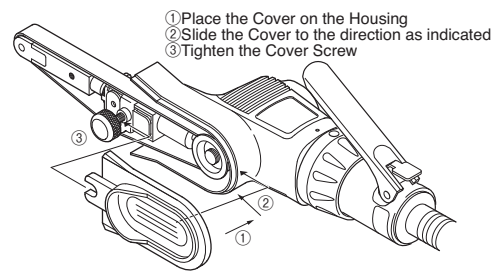


Fig. 5

**4-4. Adjusting the Tracking (Fig. 6)**

Loosen the Hex. Socket Set Screw by the Hex. Socket Screw Key 1.5 as shown in Fig. 7 and turn the adjusting screw with a Pan Head screwdriver so that the Abrasive Belt may run almost in the center of the Idle Pulley, then turn the Hex. Socket Set Screw by the Hex. Socket Screw Key to lock the adjusting screw.

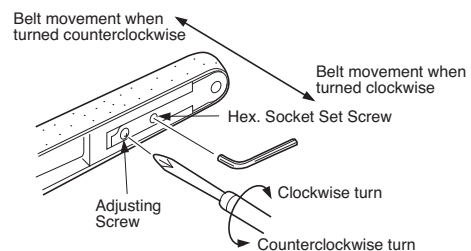


Fig. 6

**4-5. Relocation of Throttle Lever (Fig. 7)**

The Throttle Lever can be positioned on either side of the tool body comfortable both to right-handed or left-handed (southpaw) operator, as follows;

- 1) Turn the Valve Ring to align [○] mark on the Ring

to [●] mark on the Hosing.

- 2) Loosen the Hex. Socket Set Screw found at "A" on Fig. 7 with Hex. Socket Screw Key 1.5 included in the package.
  - 3) Twist the Rear Valve Ass'y by 180 degrees around the Housing and tighten back the screw securely.
- ※ Never fix the screw back when the [○] and [●] marks are not aligned. Such misaligned assembly will not give you the full power.
  - ※ Loose Rear Valve Ass'y is dangerous as it will allow Throttle Lever moving around during the operation.

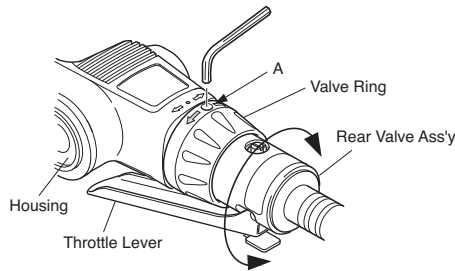


Fig. 7

#### 4-6. Offset Bracket (Fig. 8)

The Offset Bracket is removable.

The original position as shown below is for the right-handed user. If you are left-handed (southpaw) user, first put Offset Bracket on the opposite side of the tool, and put the Idle Pulley Shaft and Throttle Lever facing to the other side. You can operate the tool as comfortable as the right-handed does.

- 1) Follow the belt replacement steps to remove the Cover and Abrasive Belt.
- 2) Pull out the Offset Bracket and put it back on to the slot from the other side of the tool.
- 3) Press the Push Button and the Idle Pulley Shaft will pop out. Twist the Idle Pulley shaft by 180 degrees. Put it back all the way until it is locked while aligning the pin on the Idle Pulley Shaft into the guide groove.
- 4) Mount Abrasive Belt and the Cover back.
- 5) Follow procedure in 4-5. for the Throttle Lever relocation.

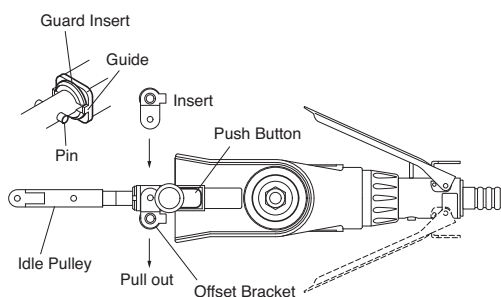


Fig. 8

#### 4-7. Sanding Operation

### ! Caution

- Do not press the Abrasive Belt too hard upon the workpiece. If you do so, the Abrasive Belt may break.
- When using a non-woven Belt, do not use the Offset Bracket. If you do so, the Belt may come Off, causing personal injury.

Hold the tool and press the Throttle Lever. Lightly press the Abrasive Belt (between the Idle Pulley and the Offset Bracket) against a material to be sanded and keep on sanding.

You can select any sanding direction (forward or backward) by the Valve Ring.

### 5. THREAD SIZE OF HOSE FITTING

The product comes with a metal fitting with Rc (metric) thread. Connect the Bushing R thread × NPT thread included as standard accessories, if you would like to have American NPT thread instead.

### 6. STORAGE

### ! Caution

- When tool is not used, store it out of children.

Avoid storing the tool in a location subject to high humidity. If the tool is left as it is used, residual moisture on the inside can cause rusting. Before storing, and after operation, oil the tool at the air inlet with machine oil ISO VG-10 and run it for a short time.

### 7. OPTIONAL PARTS

Abrasive Belt with various abrasives and grain sizes are separately prepared in the market. Select them at your needs.

### 8. ORDERING SERVICE PARTS

For further operational and handling information or for replacement of parts and components, contact the company from whom you purchased the tool or an authorized dealer.

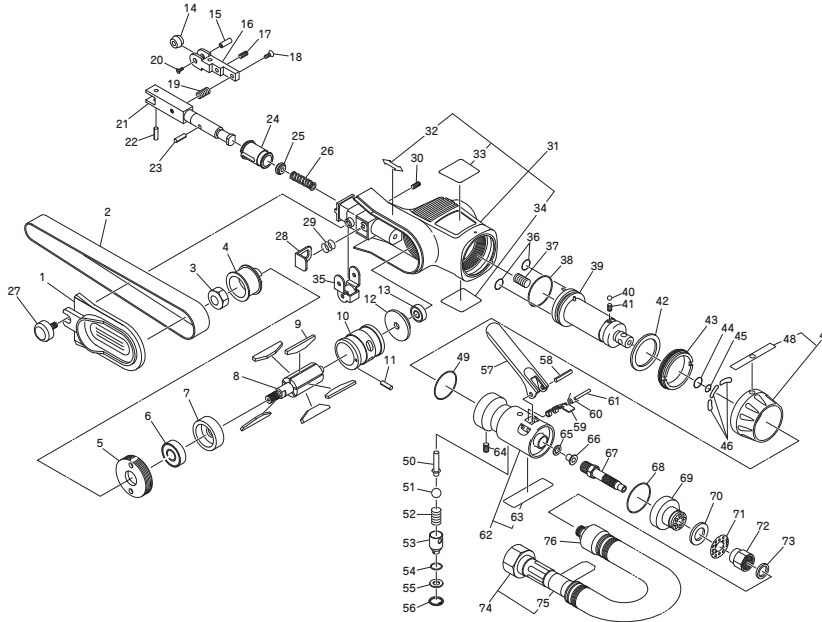
In ordering parts and components give each part number, part name and quantity required.

Use only NITTO genuine parts.

## 9. EXPLODED DIAGRAM: BB-10A

### Warning

This diagram is for your reference only. Do not attempt to service or repair the Tool.  
Do not take the Tool apart. Contact an authorized Nitto dealer for all service and repair of the Tool.  
Improper service and repair can cause accidents and severe injuries.  
Never attempt to modify the Tool.  
Never attempt service or repair the Tool yourself.



The parts numbers with ( ) are included in the Ass'y parts written above them.

No.	Parts No.	Description	Qty	Price
1	TQ07219	Cover	1	
2		Abrasive Belt Z76 #100x10	1	
3	TP01924	Hex. Nut M6	1	
4	TQ07215	Drive Pulley	1	
5	TQ07216	Lock Screw	1	
6	TQ07226	Ball Bearing 698ZZ	1	
7	TQ07199	End Plate B	1	
8	TQ07196	Rotor	1	
9	TB05219	Blade Ass'y (5pcs/set)	1 set	
10	TQ07197	Cylinder	1	
11	TP04225	Spring Pin 2x4	1	
12	TQ07198	End Plate A	1	
13	TQ07225	Ball Bearing 695ZZ	1	
14	TA99155	Idle Pulley 10 Sub Ass'y	1 set	
15	TP12431	Idle Pulley Shaft 10	1	
16	TP14761	Bracket 10	1	
17	TP02154	Hex. Socket Set Screw with Flat Point 3x6	1	
18	TP05121	Countersunk Head Screw 3x10	1	
19	TP14763	Spring 0.9x7.5x6.5	1	
20	TP14455	Countersunk Head Screw 2x5	1	
21	TQ07203	Tension Bar	1	
22	TP14798	Spring Pin 3x10	1	
23	TQ07228	Spring Pin 3x12	1	
24	TQ07201	Guard Insert	1	
25	TQ07248	Stopper	1	
26	TQ07204	Spring 1x8.2x27.5	1	
27	TQ07220	Cover Screw	1	
28	TQ07217	Push Button	1	
29	TQ07218	Spring 0.35x7.5x7	1	
30	TQ07618	Hex. Socket Set Screw with Flat Point 3x3	1	
31	TB08790	Housing Ass'y	1 set	
32	(TQ07221)	Rotating Direction Label	2	
33	(TQ11499)	Label Model Number	1	
34	(TQ12878)	Warning Label	1	
35	TB05539	Offset Bracket Ass'y	1 set	
36	TQ10274	O-ring SS-050	2	
37	TP06141	Hex. Socket Set Screw with Flat Point 6x6	1	
38	CP27013	O-ring JASO-1025	1	
39	TB05962	Front Valve Sub Ass'y	1 set	
40	TP15767	Ball O.D.3	1	
41	TQ10276	Spring 0.5x2.5x4.7	1	
42	TQ07208	Spacer 23x30x1.5	1	
43	TQ07209	Lock Ring	1	

No.	Parts No.	Description	Qty	Price
44	TP14604	O-ring S-10	1	
45	TQ07356	O-ring S-6	1	
46	TQ12705	O-ring S-12.5	3	
47	TB08663	Valve Ring Ass'y	1 set	
48	(TQ10263)	Label Switch	1	
49	TP03988	O-ring S-20	1	
50	TB07912	Valve Stem Ass'y	1 set	
51	TQ10271	Ball 1/4	1	
52	TQ10259	Valve Spring	1	
53	TQ10258	Adjust Valve	1	
54	TP12003	O-ring KS-5	1	
55	TP02152	Spacer M5	1	
56	TP17147	Internal Retaining Ring IRTW-10	1	
57	TQ10257	Throttle Lever	1	
58	TP15780	Spring Pin 3x24	1	
59	TQ10256	Lock Lever	1	
60	TQ10255	Lock Lever Spring	1	
61	TQ10269	Parallel Pin 2.5x16	1	
62	TB08792	Rear Valve Sub Ass'y	1 set	
63	(TQ12676)	Warning Label CE Mark	1	
64	TQ11146	Hex. Socket Set Screw with Cup Point 3x4	1	
65	TP06129	Spacer M3	1	
66	TQ10273	Hex. Socket Low Head Cap Screw 3x5	1	
67	TQ11497	Charge Nipple	1	
68	TQ10280	O-ring S-22	1	
69	TQ10262	Hose Holder	1	
70	TQ07212	Muffler	1	
71	TQ11498	Muffler Cover	1	
72	TQ11496	Adjust Nut	1	
73	CP26930	O-ring S-7	1	
74	TB08730	Charge Hose J Ass'y	1 set	
75	(TQ11519)	Label Lubrication	1	
76	TQ04367	Exhaust Hose	1	

#### Standard Accessories

No.	Parts No.	Description	Qty	Price
	TP14797	Hex. Socket Screw Key 1.5	1	
		Abrasive Belt Z76 #120x10	1	
		Abrasive Belt Z76 #180x10	1	
		Abrasive Belt Z76 #240x10	1	
	TP02236	Bushing R1/4 x NPT1/4	1	
	TQ12879	Instruction Manual	1	
	TQ12881	Declaration of Conformity	1	







Overseas Affiliates / Offices

NITTO KOHKI U.S.A., Inc.
4525 Turnberry Drive, Hanover Park, IL 60133, U.S.A
Tel: (1)-630-924-9323 Fax: (1)-630-924-0303
http://www.nittokohki.com/index.html

NITTO KOHKI EUROPE Co., Ltd.
Unit 21, Empire Centre, Imperial Way,
Watford Hertfordshire, WD24 4TS, United Kingdom
Tel: (44)-01923-239668 Fax: (44)-01923-248815
http://www.nitto.co.uk/

NITTO KOHKI DEUTSCHLAND GmbH
Lerchenstr. 47, D-71144 Steinenbronn, Germany
Tel: (49)-7157-22436 Fax: (49)-7157-22437
http://www.nitto-kohki.de/

NITTO KOHKI AUSTRALIA Pty. Ltd.
77 Brandl Street, Eight Mile Plains QLD 4113,
Australia
Tel: (61)-7-3340-4600 Fax: (61)-7-3340-4640
http://www.nitto-australia.com.au/

NITTO KOHKI Co., Ltd. Singapore Branch
10 Ubi Crescent #01-62, Ubi Techpark Lobby D,
Singapore 408564
Tel: (65)-6227-5360 Fax: (65)-6227-0192
http://www.nitto-kohki.co.jp/e/nksb/

NITTO KOHKI Co., Ltd. Shanghai Representative Office
#1117 Ruijing Building, Maoming South Road,
Shanghai 200020 China
Tel: (86)-21-6415-3935 Fax: (86)-21-6472-6957
http://www.nitto-kohki.cn/

NITTO KOHKI Co., Ltd. Shenzhen Representative Office
#0726 International Culture Building, 3039, Shennan
Zhong Rd., Futian District, Shenzhen, 518003 China
Tel: (86)-755-8375-2185 Fax: (86)-755-8375-2187
http://www.nitto-kohki.cn/

NITTO KOHKI Co., Ltd. Bangkok Representative Office
38Q, House Convent Bldg, 7th Floor, Unit 7A,
Convent Rd, Silom, Bangkok, 10500 Thailand
Tel: (66)-2-632-0307 Fax: (66)-2-632-0308
http://www.nittobkk.com/eng\_index.htm

EC DECLARATION OF CONFORMITY

We hereby declare that the following our product conforms with the essential health and safety requirements of EC Directives.

Product: PNEUMATIC BELT SANDER
Model: BABY BELTON:BB-10A
Serial No: X X X X X
Consecutive numbers (00001~99999)
Christian era's last digit (0~9)

Manufacturer: NITTO KOHKI Co., Ltd.
2-9-4, Nakaikegami, Ohta-ku, Tokyo, 146-8555, Japan

Authorised Compiler in the Community:
Masatoshi Ogue
President
NITTO KOHKI EUROPE Co., Ltd.
Unit21, Empire Centre, Imperial Way, Watford Hertfordshire, WD24 4TS, UK
Tel:(44)-01923-239668 Fax:(44)-01923-248815

Directive: 98/37/EC and 2006/42/EC Machinery Directive

The above product has been evaluated for conformity with above directives using the following European standards.
The technical construction file (TCF) for this product is retained at the above manufacturer's location.

Machinery Directive: EN ISO12100-1:2003, EN ISO12100-2:2003,
EN ISO14121-1:2007, EN792-8:2001+A1:2008, others
Sound Pressure/Power Level: EN ISO15744:2008, EN ISO4871:1996
Vibration Level: EN28662-1:1992, EN ISO8662-8:1997

Name: K.Kishi
Title: GENERAL MANAGER MACHINE TOOLS DIV.

Being the responsible person appointed and employed the manufacturer.